

**Overview Spin-On Filters** 150

**Quick Reference Guide** 151  
 Spin-On Filter Heads  
 Spin-On Filter Elements

**Spin-On Filter Heads** 152 - 158



**SLF-02 / 03 / 04** 152  
 Max. 14 bar / 200 PSI  
 Max. 26 l/min / 7 US GPM


**SAF-05 / 06 / 07 / 11** 153  
 Max. 14 bar / 200 PSI  
 Max. 90 l/min / 25 US GPM


**SAF-10 / 13** 154  
 Max. 14 bar / 200 PSI  
 Max. 128 l/min / 34 US GPM


**SSF-12** 155  
 Max. 12 bar / 174 PSI  
 Max. 90 l/min / 25 US GPM


**SSF-20L** 156  
 Max. 12 bar / 174 PSI  
 Max. 225 l/min / 60 US GPM


**SSF-100 / 120 / 120L / 130 / 160** 157  
 Max. 14 bar / 200 PSI  
 Max. 225 l/min / 60 US GPM


**SSF-150 / 180** 158  
 Max. 14 bar / 200 PSI  
 Max. 300 l/min / 80 US GPM

**Double Spin-On Filter Heads** 159 - 163


**SSF-24B** 159  
 Max. 12 bar / 174 PSI  
 Max. 454 l/min / 120 US GPM


**SSF-24N / 24S** 160  
 Max. 12 bar / 174 PSI  
 Max. 454 l/min / 120 US GPM


**SSF-25B** 161  
 Max. 12 bar / 174 PSI  
 Max. 454 l/min / 120 US GPM


**SSF-25FM** 162  
 Max. 12 bar / 174 PSI  
 Max. 454 l/min / 120 US GPM


**SSF-25** 163  
 Max. 12 bar / 174 PSI  
 Max. 454 l/min / 120 US GPM

**Tank Top Spin-On Filter Heads** 164 - 167


**SSFT-12B** 164  
 Max. 7 bar / 100 PSI  
 Max. 75 l/min / 20 US GPM



**SSFT-12** 165  
 Max. 7 bar / 100 PSI  
 Max. 75 l/min / 20 US GPM


**SSFT-20B** 166  
 Max. 7 bar / 100 PSI  
 Max. 200 l/min / 53 US GPM


**SSFT-20** 167  
 Max. 7 bar / 100 PSI  
 Max. 200 l/min / 53 US GPM

**Spin-On Filter Elements** 168 - 173

**Overview Spin-On Filter Elements** 168


**SFC-35 / 36** 169  
**SFCT-35 / 36**

**SFC-57 / 58** 170  
**SFCT-57 / 58**

**SF-63** 171


**SF-65** 172


**SF-67** 173

**Flow Characteristics** 174 - 176

**SFC/SFCT-35 / 36** 174  
**SFC/SFCT-57 / 58**  
**SF-63**
**SF-65** 175

**SF-67** 176

**Clogging Indicators** 177

**F**


## Description

STAUFF provides a complete range of Spin-On Filters which can be used either as Suction-Line filters or as Return-Line filters for low pressure applications. The various ranges meet international standards.

### Material

- Filter head: Aluminium

### Media Compatibility

- Mineral oils, others on request

### Connections

- BSP
- NPT
- SAE flange
- SAE thread
- Other ports connections on request

### Operating Pressure

- Max. 14 bar / 200 PSI

### Temperature Range

- -30 °C ... +100 °C / -22 °F ... +212 °F

### Nominal Flow Rate

- Max. 460 l/min / 120 US GPM

## Options and Accessories

### Clogging Indicators

- Visual clogging indicator with coloured segments
- Electrical clogging switch
- Other types are available on request

### Private Labelling

- On request, the filter elements can be printed with a private label



Spin-On Filter Heads  
designed for in-line assembly



Spin-On Filter Heads  
designed for tank top assembly

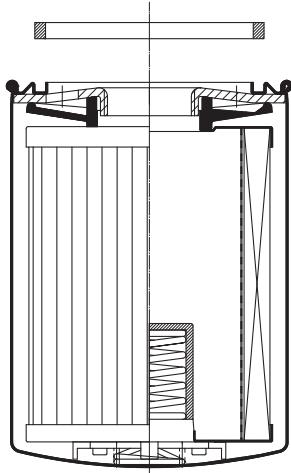


Spin-On Double Filter Heads  
designed for in-line assembly



## Spin-On Filters ■ Quick Reference Guide

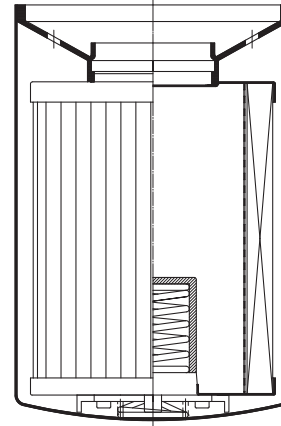
**Type A**

 Spin-On Filter with seal contour A  
for filter elements with inner seal


A

**Type B**

 Spin-On Filter with seal contour B  
for filter elements with outer seal

 Allowed seal types for Spin-On elements  
 Thin seal   
 Wide seal   
 L-shaped seal 


B

F

## Spin-On Filters Quick Reference Guide

## Spin-On Filter Heads

## Spin-On Filter Elements (see page ...)

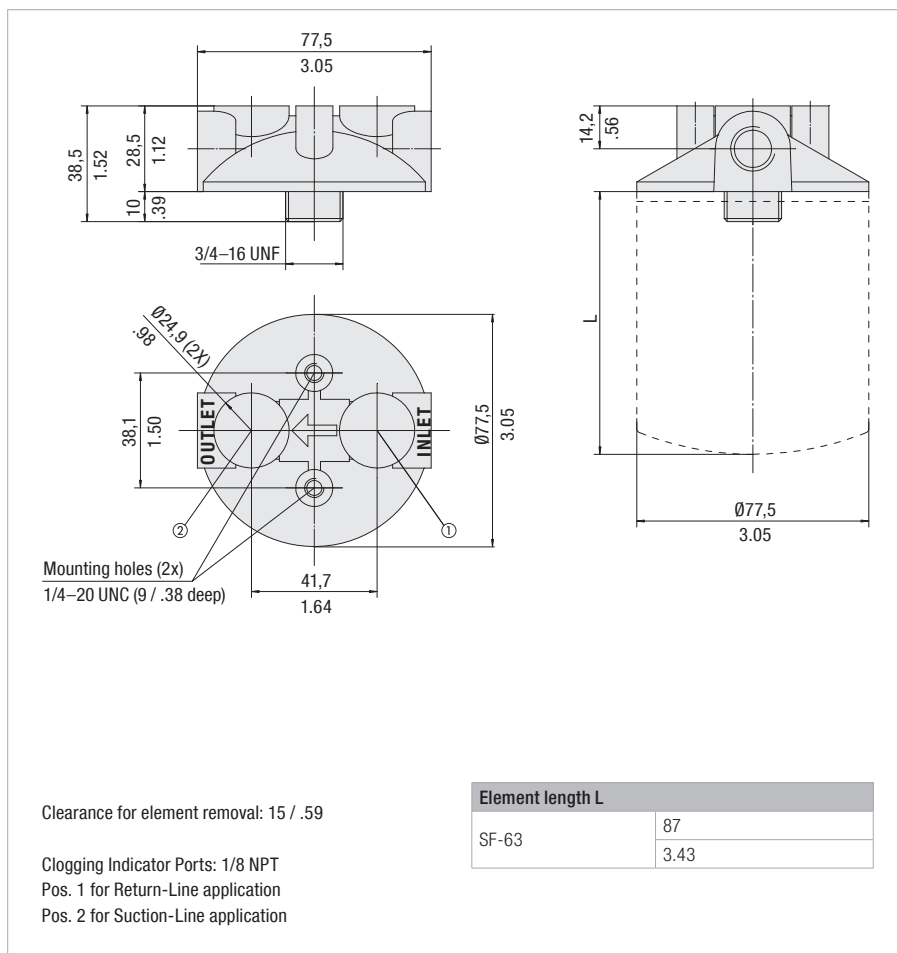
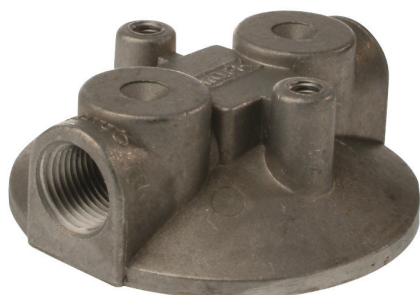
Series	Size	Port	Spigot	Max. Flow Rate*		Catalog Page	Seal Contour		SF-63	SF-65	SF-67	SFC-35 SFC-36	SFC-57 SFC-58	SFCT-35 SFCT-36	SFCT-57 SFCT-58
				l/min	US GPM		Type A	Type B							
SLF	02	1/4 NPT	3/4-16 UNF	19	5	152	x		171						
SLF	03	3/8 NPT	3/4-16 UNF	19	5	152	x		171						
SLF	04	9/16-18 UN	3/4-16 UNF	26	7	152	x		171						
SAF	05	1/2 NPT	1-12 UNF	57	15	153	x			172					
SAF	06	3/4-16 UN	1-12 UNF	57	15	153	x			172					
SAF	07	3/4 NPT	1-12 UNF	90	25	153	x			172					
SAF	11	1-1/16-12 UN	1-12 UNF	90	25	153	x			172					
SAF	10	1 NPT	1-12 UNF	128	34	154	x			172					
SAF	13	1-5/16-12 UN	1-12 UNF	128	34	154	x			172					
SSF	12	G3/4	G3/4	90	25	155	x					169			
SSF	20L	G1-1/4	G1-1/4 + 1-1/2-16 UN	225	60	156	x	x			173		170		
SSF	100	1 NPT	G1-1/4 + 1-1/2-16 UN	170	45	157	x	x			173		170		
SSF	120L	1-1/4 NPT	G1-1/4 + 1-1/2-16 UN	225	60	157	x	x			173		170		
SSF	120	1-1/4 NPT	G1-1/4 + 1-1/2-16 UN	225	60	157	x	x			173		170		
SSF	130	1-5/16-12 UN	G1-1/4 + 1-1/2-16 UN	225	60	157	x	x			173		170		
SSF	160	1-5/8-12 UN	G1-1/4 + 1-1/2-16 UN	225	60	157	x	x			173		170		
SSF	150	1-1/2 NPT	1-1/2-16 UN	300	80	158		x			173				
SSF	180	1-7/8-12 UN	1-1/2-16 UN	300	80	158		x			173				
SSF	24B	G1-1/2	G1-1/4 + 1-1/2-16 UN	454	120	159	x	x			173		170		
SSF	24N	1-1/2 NPT	G1-1/4 + 1-1/2-16 UN	454	120	160	x	x			173		170		
SSF	24S	1-7/8-12 UN	G1-1/4 + 1-1/2-16 UN	454	120	160	x	x			173		170		
SSF	25B	G1-1/2	G1-1/4	454	120	161	x	x			173		170		
SSF	25FM	1-1/2 SAE Flange	1-1/2-16 UN	454	120	162	x	x			173		170		
SSF	25	1-1/2 NPT and 2 SAE Flange	G1-1/4 + 1-1/2-16 UN	454	120	163	x	x			173		170		
SSFT	12B	G3/4	G3/4	75	20	164	x	x						169	
SSFT	12	3/4 NPT	G3/4	75	20	165	x	x						169	
SSFT	20B	G1-1/2	G1-1/4 + 1-1/2-16 UN	200	53	166	x								170
SSFT	20	1-1/2 NPT	G1-1/4 + 1-1/2-16 UN	200	53	167	x								170

\* Note: Reflects nominal flow rate for Return-Line application. Actual flow rate will depend on selected element and the viscosity of the fluid.



Spin-On Filter Heads ■ SLF-02 / 03 / 04

Dimensions



Dimensions in mm / in

Technical Data

Construction

- In-line Spin-On filter head

Material

- Aluminium

Port Connections

- NPT
- SAE O-ring thread

Flow Rate

- 26 l/min / 7 US GPM for Return-Line application
- 7 l/min / 2 US GPM for Suction-Line application

Operating Pressure

- Max. 14 bar / 200 PSI
- Max. 5,5 bar / 80 PSI differential pressure (for any application without bypass valve)

Temperature Range

- -30 °C ... +100 °C / -22 °F ... +212 °F

Media Compatibility

- Mineral oils, other fluids on request

Options and Accessories



Filter Elements

- For use with SF-63 series elements
- For element types with seal contour type A
- For element types and flow characteristics see page 174
- The element is not part of the scope of delivery

Order Code

SLF - 02 - 0

①      ②      ③

① Type

Spin-On Filter Head **SLF**

② Connection Style

Connection	Thread	Code
NPT	1/4	<b>02</b>
NPT	3/8	<b>03</b>
SAE	9/16-18	<b>04</b>

③ Clogging Indicator Port Options

No clogging indicator port **0**  
Special **9**

Note: Standard clogging indicator port is 1/8 NPT.



**Spin-On Filter Heads ■ SAF-05 / 06 / 07 / 11**
**Dimensions**

44  
1.75  
22  
.87  
15  
.6  
1-12 UNF

38,1  
1.50

95  
3.75  
76  
3  
2  
1  
2  
1

Mounting holes (2x)  
1/4-20 UNC (17 / .70 deep)

Clearance for element removal: 19 / .75

Clogging Indicator Ports: 1/8 NPT  
Pos. 1 for Return-Line application  
Pos. 2 for Suction-Line application

Element length L

L1 SF-65 short elements	147
	5.76
L2 SF-65 long elements	204
	8

Ø93,2  
3.67

L1  
L2

Dimensions in mm / in


**Technical Data**
**Construction**

- In-line Spin-On filter head

**Material**

- Aluminium

**Port Connections**

- NPT
- SAE O-ring thread

**Flow Rate**

- 90 l/min / 25 US GPM for Return-Line application
- 23 l/min / 6 US GPM for Suction-Line application

**Operating Pressure**

- Max. 14 bar / 200 PSI
- Max. 5,5 bar / 80 PSI differential pressure (for any application without bypass valve)

**Temperature Range**

- -30 °C ... +100 °C / -22 °F ... +212 °F

**Media Compatibility**

- Mineral oils, other fluids on request

**Options and Accessories**

**Filter Elements**

- For use with SF-65 series elements
- For element types with seal contour type A
- For element types and flow characteristics see page 175
- The element is not part of the scope of delivery

**Valve**

- Bypass valve (integrated in the head): Optional

**Clogging Indicators**

- For clogging indicator types see page 177

**Order Code**

**SAF - 07 - B1.7 - O**

①      ②      ③      ④

**① Type**

Spin-On Filter Head **SAF**

**② Connection Style**

Connection	Thread	Code
NPT	1/2	<b>05</b>
SAE	3/4-16	<b>06</b>
NPT	3/4	<b>07</b>
SAE	1-1/16-12	<b>11</b>

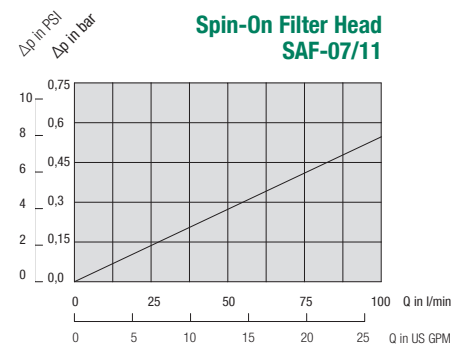
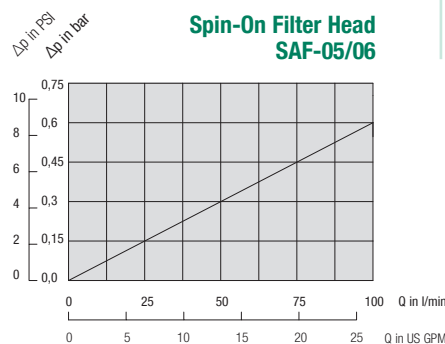
**③ Bypass Options**

No bypass	<b>0</b>
0,2 bar / 3 PSI	<b>B0.2</b>
0,35 bar / 5 PSI	<b>B0.35</b>
1 bar / 15 PSI	<b>B1</b>
1,7 bar / 25 PSI	<b>B1.7</b>

**④ Clogging Indicator Port Options**

No clogging indicator port	<b>0</b>
Clogging indicator port drilled for Return-Line application	<b>1</b>
Clogging indicator port drilled for Suction-Line application	<b>2</b>
All clogging indicator ports drilled	<b>4</b>
Special	<b>9</b>

Note: Standard clogging indicator port is 1/8 NPT.



## Spin-On Filter Heads - SAF-10 / 13



### Technical Data

#### Construction

- In-line Spin-On filter head

#### Material

- Aluminium

#### Port Connections

- NPT
- SAE O-ring thread

#### Flow Rate

- 128 l/min / 34 US GPM for Return-Line application
- 30 l/min / 8 US GPM for Suction-Line application

#### Operating Pressure

- Max. 14 bar / 200 PSI
- Max. 5,5 bar / 80 PSI differential pressure (for any application without bypass valve)

#### Temperature Range

- -30 °C ... +100 °C / -22 °F ... +212 °F

#### Media Compatibility

- Mineral oils, other fluids on request

### Options and Accessories



#### Filter Elements

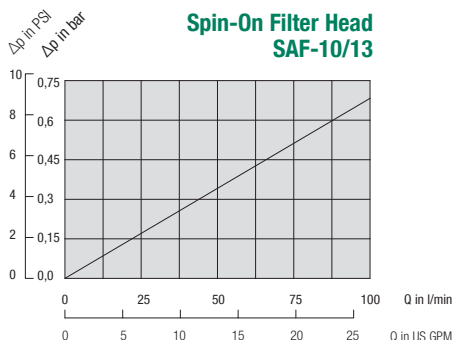
- For use with SF-65 series elements
- For element types with seal contour type A
- For element types and flow characteristics see page 175
- The element is not part of the scope of delivery

#### Valve

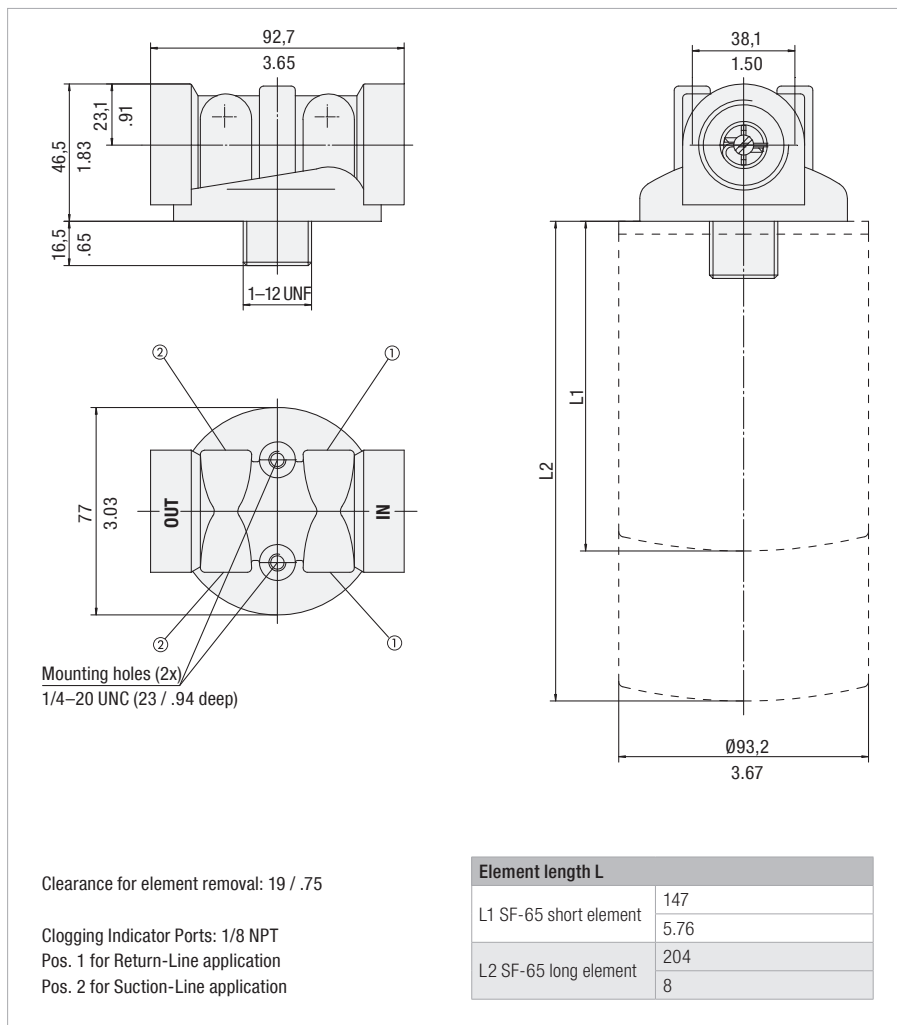
- Bypass valve (integrated in the filter head): Optional

#### Clogging Indicators

- For clogging indicator types see page 177



### Dimensions



Dimensions in mm / in

### Order Code



#### ① Type

Spin-On Filter Head **SAF**

#### ② Connection Style

Connection	Thread	Code
NPT	1	<b>10</b>
SAE	1-5/16-12	<b>13</b>

#### ③ Bypass Options

No bypass	<b>0</b>
0,2 bar / 3 PSI	<b>B0.2</b>
0,35 bar / 5 PSI	<b>B0.35</b>
1 bar / 15 PSI	<b>B1</b>
1,7 bar / 25 PSI	<b>B1.7</b>

#### ④ Clogging Indicator Port Options

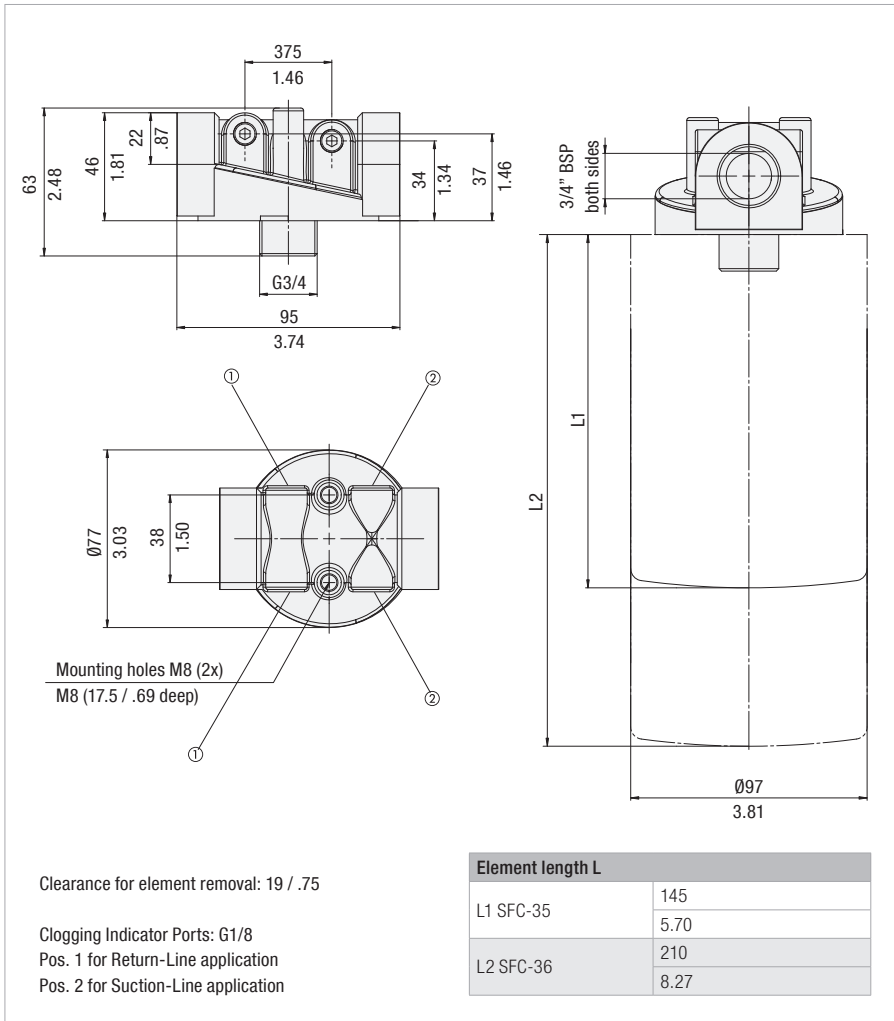
No clogging indicator port	<b>0</b>
Clogging indicator port drilled for Return-Line application	<b>1</b>
Clogging indicator port drilled for Suction-Line application	<b>2</b>
All clogging indicator ports drilled	<b>4</b>
Special	<b>9</b>

Note: Standard clogging indicator port is 1/8 NPT.



## Spin-On Filter Heads ■ SSF-12

## Dimensions



Dimensions in mm / in



## Technical Data

**Construction**

- In-line Spin-On filter head

**Material**

- Aluminium

**Port Connections**

- BSP

**Flow Rate**

- 90 l/min / 25 US GPM for Return-Line application
- 23 l/min / 6 US GPM for Suction-Line application

**Operating Pressure**

- Max. 12 bar / 174 PSI
- Max. 5 bar / 72.5 PSI differential pressure (for any applicaton without bypass valve)

**Temperature Range**

- -30 °C ... +100 °C / -22 °F ... +212 °F

**Media Compatibility**

- Mineral oils, other fluids on request

## Options and Accessories


**Filter Elements**

- For use with SFC-35/36 series elements
- For element types with seal contour type A
- For element types and flow characteristics see page 174
- The element is not part of the scope of delivery

**Valve**

- Bypass valve (integrated in the filter head): Optional

**Clogging Indicators**

- For clogging indicator types see page 177

## Order Code

SSF - 12 - B1.7 - 4 / X

①      ②      ③      ④      ⑤

## ① Type

 Spin-On Filter Head **SSF**

## ② Connection Style

Connection	Thread	Code
BSP	3/4	12

## ③ Bypass Options

No bypass	0
0,2 bar / 3 PSI	B0.2
1,7 bar / 25 PSI	B1.7

Note: Other settings available on request.

## ④ Clogging Indicator Port Options

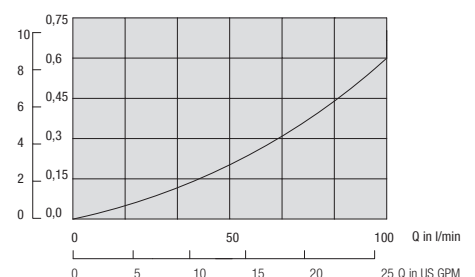
All clogging indicator ports drilled	4
Special	9

Note: Standard clogging indicator port is G1/8.

## ⑤ Design Code

Only for information	X
----------------------	---

## Spin-On Filter Head SSF-12





## Spin-On Filter Heads - SSF-20L



### Technical Data

#### Construction

- In-line Spin-On filter head

#### Material

- Aluminium

#### Port Connections

- BSP

#### Flow Rate

- 225 l/min / 60 US GPM for Return-Line application
- 46 l/min / 12 US GPM for Suction-Line application

#### Operating Pressure

- Max. 12 bar / 174 PSI
- Max. 5 bar / 72.5 PSI differential pressure (for any application without bypass valve)

#### Temperature Range

- 30 °C ... +100 °C / -22 °F ... +212 °F

#### Media Compatibility

- Mineral oils, other fluids on request

### Options and Accessories



#### Filter Elements

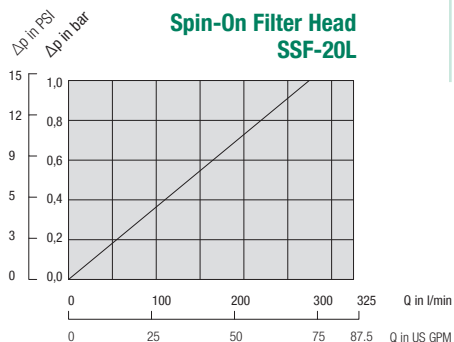
- For use with SF-67 and SFC-57/58 series elements
- For element types with seal contour type A and B
- For element types and flow characteristics see page 176 for SF-67 and page 174 for SFC-57/58.
- The element is not part of the scope of delivery

#### Valve

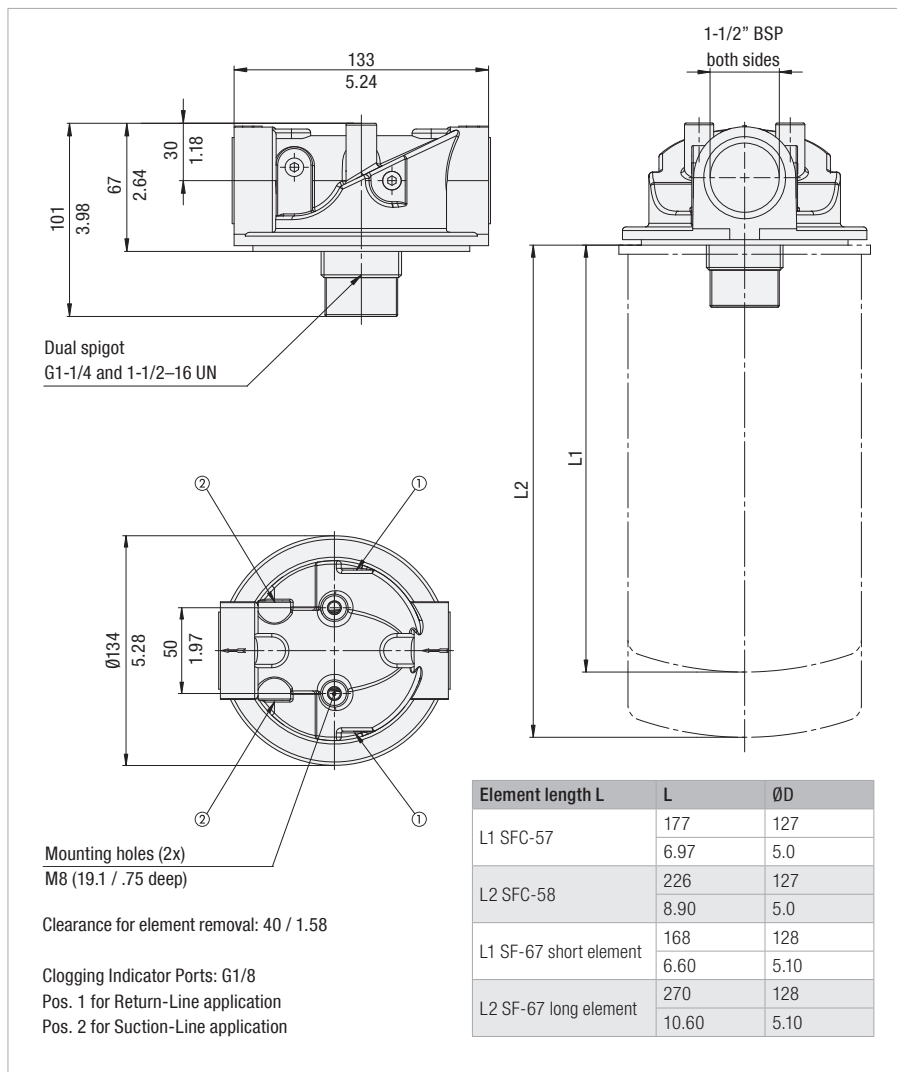
- Bypass valve (integrated in the filter head): Optional

#### Clogging Indicators

- For clogging indicator types see page 177

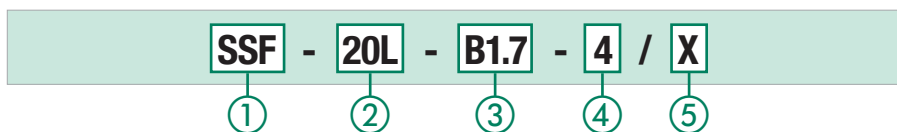


### Dimensions



Dimensions in mm / in

### Order Code



#### ① Type

Spin-On Filter Head **SSF**

#### ② Connection Style

Connection	Thread	Code
BSP	1-1/4	<b>20L</b>

#### ③ Bypass Options

No bypass	<b>0</b>
0,2 bar / 3 PSI	<b>B0.2</b>
1,7 bar / 25 PSI	<b>B1.7</b>

Note: Other settings available on request.

#### ④ Clogging Indicator Port Options

All clogging indicator ports drilled	<b>4</b>
Special	<b>9</b>

Note: Standard clogging indicator port for is G1/8.

#### ⑤ Design Code

Only for information	<b>X</b>
----------------------	----------



**Spin-On Filter Heads ■ SSF-100 / 120 / 120L / 130 / 160**
**Dimensions**

50  
1.87  
93.5  
3.68  
61  
2.4  
28  
1.10  
Dual spigot  
G1-1/4 and  
1-1/2-16 UN

133  
5.24  
L2  
L1  
ØD

Ø133  
5.24  
①  
②

Mounting holes (2x)  
5/16-18 UNC  
(19 / .75 deep)

Clearance for element removal: 40 / 1.58

Clogging Indicator Ports: 1/8 NPT  
Pos. 1 for Return-Line application  
Pos. 2 for Suction-Line application

Element length L	L	ØD
L1 SFC-57	177	127
	6.97	5.0
L2 SFC-58	226	127
	8.90	5.0
L1 SF-67 short element	168	128
	6.60	5.10
L2 SF-67 long element	270	128
	10.60	5.10

Dimensions in mm / in


**Technical Data**
**Construction**

- In-line Spin-On filter head

**Material**

- Aluminium

**Port Connections**

- NPT
- SAE O-ring thread

**Flow Rate**

- 225 l/min / 60 US GPM for Return-Line application
- 46 l/min / 12 US GPM for Suction-Line application

**Operating Pressure**

- Max. 12 bar / 174 PSI
- Max. 5 bar / 72.5 PSI differential pressure  
(for any application without bypass valve)

**Temperature Range**

- -30 °C ... +100 °C / -22 °F ... +212 °F

**Media Compatibility**

- Mineral oils, other fluids on request

**Options and Accessories**

**Filter Elements**

- For use with SF-67 and SFC-57/58 series elements
- For element types with seal contour type A and B
- For element types and flow characteristics see page 176 for SF-67 and page 174 for SFC-57/58.
- The element is not part of the scope of delivery

**Valve**

- Bypass valve (integrated in the filter head): Optional

**Clogging Indicators**

- For clogging indicator types see page 177

**Order Code**

**SSF - 120 - B1.7 - O**

①      ②      ③      ④

**① Type**

Spin-On Filter Head	<b>SSF</b>
---------------------	------------

**② Connection Style**

Connection	Thread	Code
NPT	1	<b>100</b>
NPT	1-1/4	<b>120</b>
NPT	1-1/4	<b>120L</b>
SAE	1-5/16-12	<b>130</b>
SAE	1-5/8-12	<b>160</b>

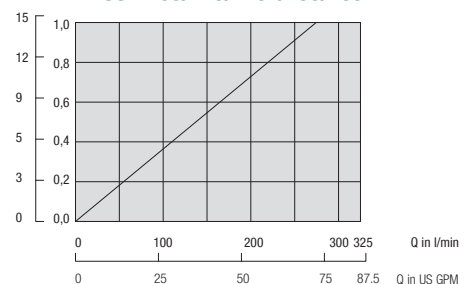
**③ Bypass Options**

No bypass	<b>0</b>
0,2 bar / 3 PSI	<b>B0.2</b>
0,35 bar / 5 PSI	<b>B0.35</b>
1 bar / 15 PSI	<b>B1</b>
1,7 bar / 25 PSI	<b>B1.7</b>

**④ Clogging Indicator Port Options**

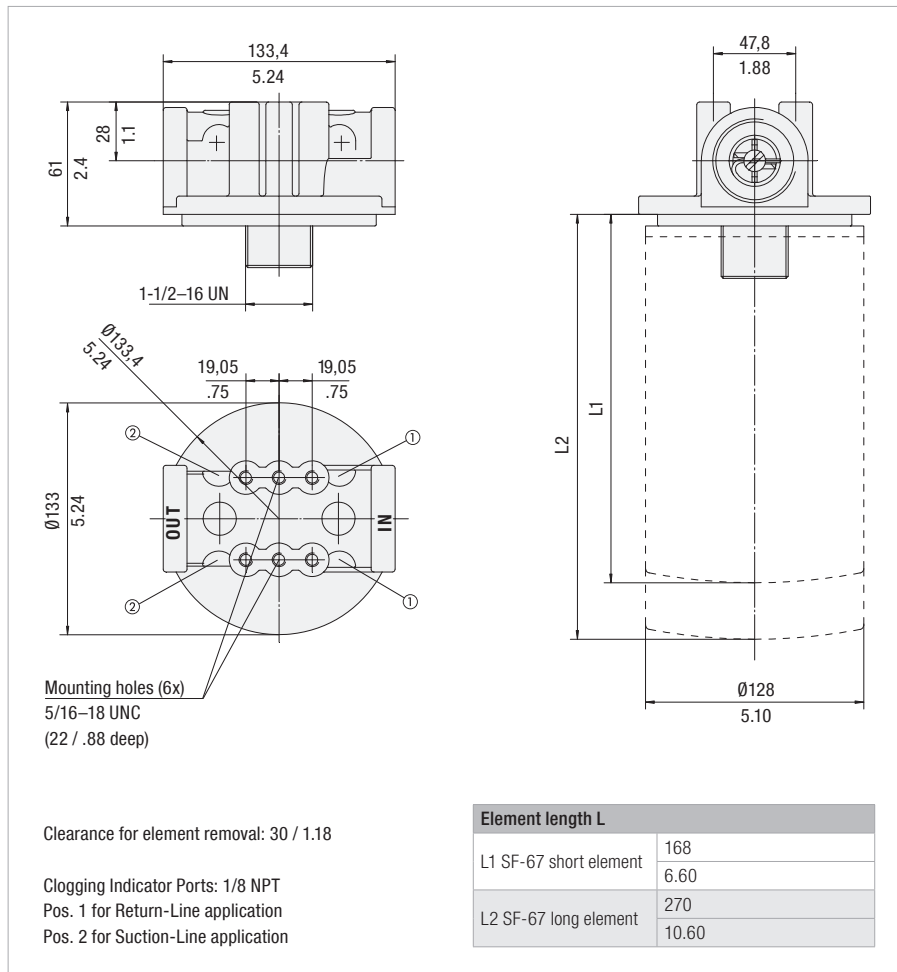
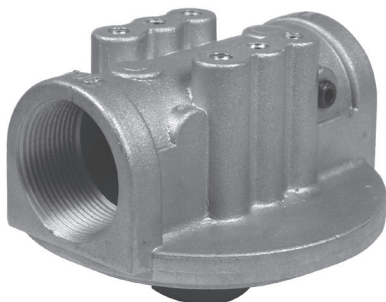
No clogging indicator port	<b>0</b>
Clogging indicator port drilled for Return-Line application	<b>1</b>
Clogging indicator port drilled for Suction-Line application	<b>2</b>
All clogging indicator ports drilled	<b>4</b>
Special	<b>9</b>

Note: Standard clogging indicator port is 1/8 NPT.

**Spin-On Filter Head  
SSF-100/120/120L/130/160**


Spin-On Filter Heads ■ SSF-150 / 180

Dimensions



Dimensions in mm / in

Technical Data

Construction

- In-line Spin-On filter head

Material

- Aluminium

Port Connections

- NPT
- SAE O-ring thread

Flow Rate

- 300 l/min / 80 US GPM for Return-Line application
- 113 l/min / 30 US GPM for Suction-Line application

Operating Pressure

- Max. 14 bar / 200 PSI
- Max. 5,5 bar / 80 PSI differential pressure (for any application without bypass valve)

Temperature Range

- -30 °C ... +100 °C / -22 °F ... +212 °F

Media Compatibility

- Mineral oils, other fluids on request

Options and Accessories



Filter Elements

- For use with SF-67 series elements
- For element types with seal contour type B
- For element types and flow characteristics see page 176
- The element is not part of the scope of delivery

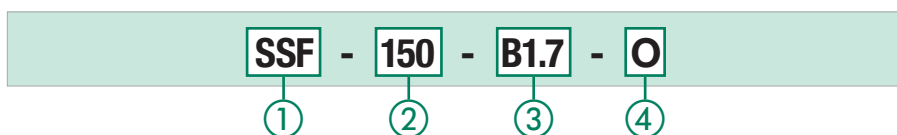
Valve

- Bypass valve (integrated in the filter head): Optional

Clogging Indicators

- For clogging indicator types see page 177

Order Code



① Type

Spin-On Filter Head **SSF**

② Connection Style

Connection	Thread	Code
NPT	1-1/2	<b>150</b>
SAE	1-7/8-12	<b>180</b>

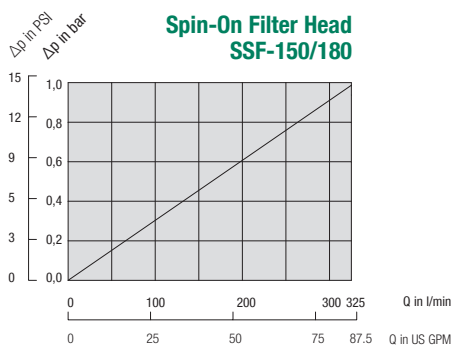
③ Bypass Options

No bypass	<b>0</b>
0,2 bar / 3 PSI	<b>B0.2</b>
0,35 bar / 5 PSI	<b>B0.35</b>
1 bar / 15 PSI	<b>B1</b>
1,7 bar / 25 PSI	<b>B1.7</b>

④ Clogging Indicator Port Options

No clogging indicator port	<b>0</b>
Clogging indicator port drilled for Return-Line application	<b>1</b>
Clogging indicator port drilled for Suction-Line application	<b>2</b>
All clogging indicator ports drilled	<b>4</b>
Special	<b>9</b>

Note: Standard clogging indicator port is 1/8 NPT.



**Double Spin-On Filter Heads ■ SSF-24B**
**Dimensions**

Dual spigot G1-1/4 and 1-1/2-16 UN

Dual spigot G1-1/4 and 1-1/2-16 UN

Mounting holes (2x) M10

Element length L	L	ØD
L1 SFC-57	177	127
L2 SFC-58	6.97	5.0
L1 SF-67 short element	226	127
L2 SF-67 long element	8.90	5.0
L1 SF-67 short element	168	128
L2 SF-67 long element	6.60	5.10
L2 SF-67 long element	270	128
L2 SF-67 long element	10.60	5.10

Clearance for element removal: 40 / 1.58

Clogging Indicator Port: G1/8  
Pos. 1 for Return-Line application  
Pos. 2 for Suction-Line application

Dimensions in mm / in


**Technical Data**
**Construction**

- In-line Double Spin-On filter head

**Material**

- Aluminium

**Port Connections**

- BSP

**Flow Rate**

- 454 l/min / 120 US GPM for Return-Line application
- 132 l/min / 35 US GPM for Suction-Line application

**Operating Pressure**

- Max. 12 bar / 174 PSI
- Max. 5 bar / 72.5 PSI differential pressure (for any application without bypass valve)

**Temperature Range**

- -30 °C ... +100 °C / -22 °F ... +212 °F

**Media Compatibility**

- Mineral oils, other fluids on request

**Options and Accessories**

**Filter Elements**

- For use with SF-67 and SFC-57/58 series elements
- For element types with seal contour type A and B
- For element types and flow characteristics see page 176 for SF67 and page 174 for SFC-57/58
- The element is not part of the scope of delivery

**Valve**

- Bypass valve (integrated in the head): Optional

**Clogging Indicators**

- For clogging indicator types see page 177

**Order Code**
**SSF - 24B - B1.7 - 4**

①

②

③

④

**① Type**

 Double Spin-On Filter Head **SSF**
**② Connection Style**

Connection	Thread	Code
BSP	1-1/2	<b>24B</b>

**③ Bypass Options**

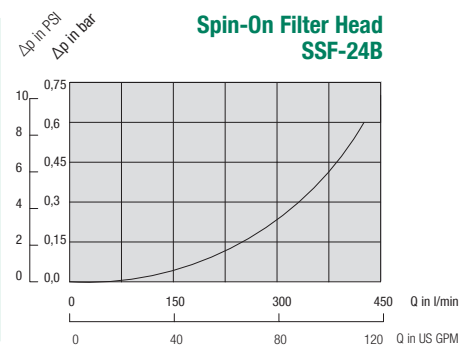
No bypass	<b>0</b>
0,2 bar / 3 PSI	<b>B0.2</b>
1,7 bar / 25 PSI	<b>B1.7</b>

Note: Other settings available on request.

**④ Clogging Indicator Port Options**

All clogging indicator ports drilled	<b>4</b>
Special	<b>9</b>

Note: Standard clogging indicator port is G1/8.



Double Spin-On Filter Heads ■ SSF-24N / 24S

Dimensions



Technical Data

Construction

- In-line Double Spin-On filter head

Material

- Aluminium

Port Connections

- NPT
- SAE flange
- SAE O-ring thread

Flow Rate

- 454 l/min / 120 US GPM for Return-Line application
- 132 l/min / 35 US GPM for Suction-Line application

Operating Pressure

- Max. 12 bar / 174 PSI
- Max. 5 bar / 72.5 PSI differential pressure (for any applicaton without bypass valve)

Temperature Range

- -30 °C ... +100 °C / -22 °F ... +212 °F

Media Compatibility

- Mineral oils, other fluids on request

Options and Accessories



Filter Elements

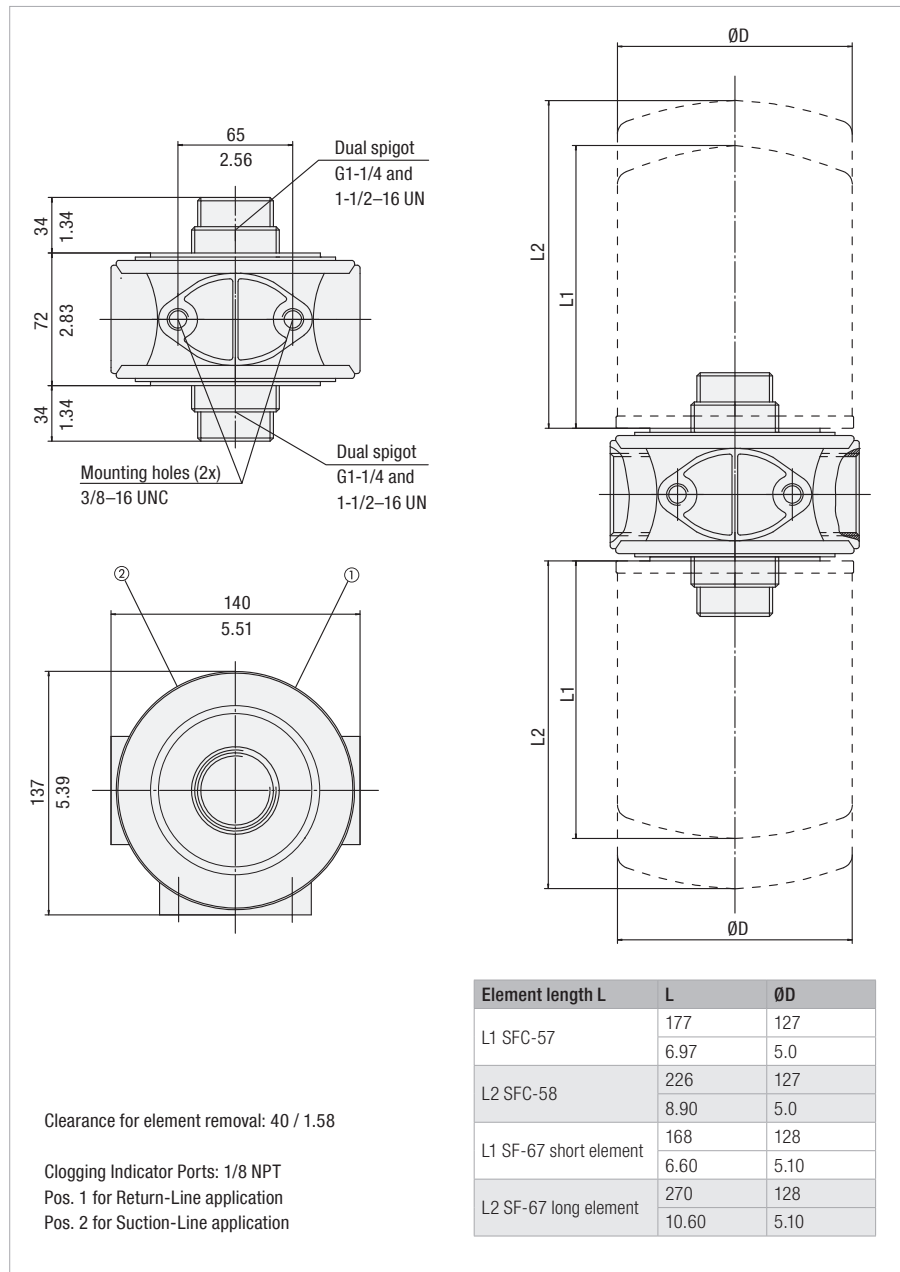
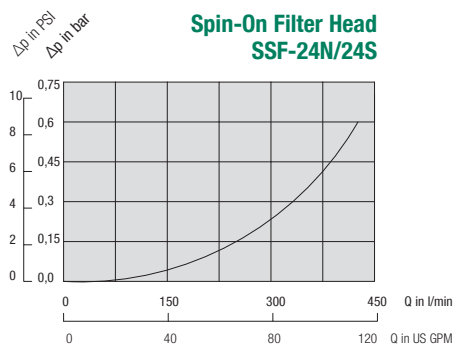
- For use with SF-67 and SFC-57/58 series elements
- For element types with seal contour type A and B
- For element types and flow characteristics see page 176 for SF-67 and page 174 for SFC-57/58
- The element is not part of the scope of delivery

Valve

- Bypass valve (integrated in the head): Optional

Clogging Indicators

- For clogging indicator types see page 177



Dimensions in mm / in

Order Code

**SSF - 24N - B1.7 - O**

①      ②      ③      ④

① Type

Double Spin-On Filter Head **SSF**

② Connection Style

Connection	Thread	Code
NPT	1-1/2	<b>24N</b>
SAE	1-7/8-12	<b>24S</b>

③ Bypass Options

No bypass	<b>0</b>
0,2 bar / 3 PSI	<b>B0.2</b>
0,35 bar / 5 PSI	<b>B0.35</b>
1 bar / 15 PSI	<b>B1</b>
1,7 bar / 25 PSI	<b>B1.7</b>

④ Clogging Indicator Port Options

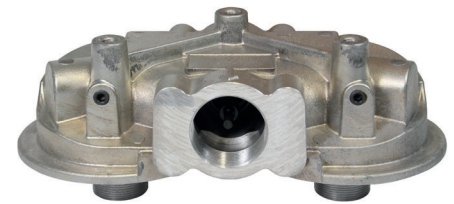
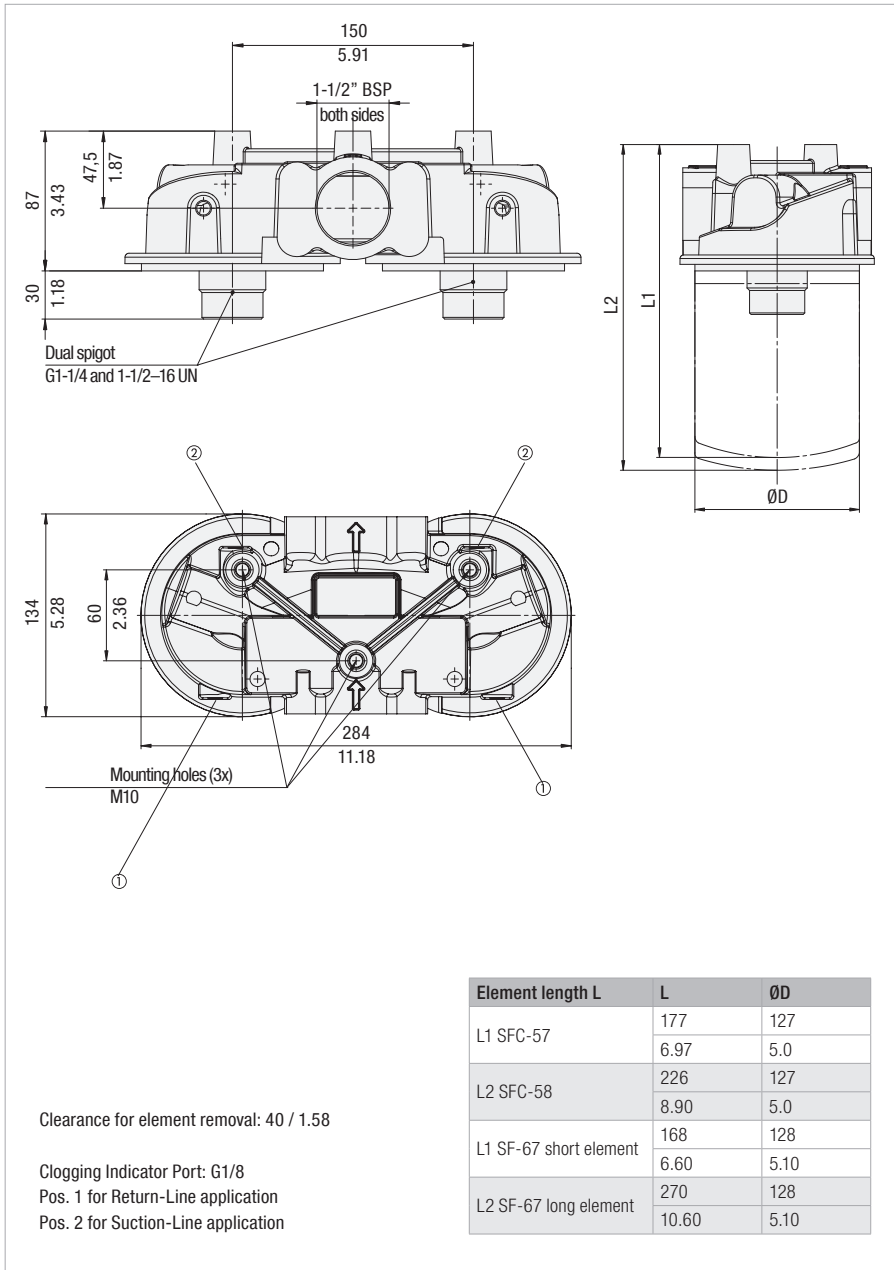
No clogging indicator port	<b>0</b>
Clogging indicator port drilled for Return-Line application	<b>1</b>
Clogging indicator port drilled for Suction-Line application	<b>2</b>
All clogging indicator ports drilled	<b>4</b>
Special	<b>9</b>

Note: Standard clogging indicator port is 1/8 NPT.



## Double Spin-On Filter Heads ■ SSF-25B

## Dimensions



## Technical Data

## Construction

- In-line Double Spin-On filter head

## Material

- Aluminium

## Port Connections

- BSP

## Flow Rate

- 454 l/min / 120 US GPM for Return-Line application
- 132 l/min / 35 US GPM for Suction-Line application

## Operating Pressure

- Max. 12 bar / 174 PSI
- Max. 5 bar / 72.5 PSI differential pressure (for any application without bypass valve)

## Temperature Range

- -30 °C ... +100 °C / -22 °F ... +212 °F

## Media Compatibility

- Mineral oils, other fluids on request

## Options and Accessories



## Filter Elements

- For use with SF-67 and SFC-57/58 series elements
- For element types with seal contour type A and B
- For element types and flow characteristics see page 176 for SF-67 and page 174 for SFC-57/58
- The element is not part of the scope of delivery

## Valve

- Bypass valve (integrated in the head): Optional

## Clogging Indicators

- For clogging indicator types see page 177

## Order Code

**SSF** - **25B** - **B1.7** - **4** / **X**

①      ②      ③      ④      ⑤

## ① Type

Double Spin-On Filter Head **SSF**

## ② Connection Style

Connection	Thread	Code
BSP	1-1/2	<b>25B</b>

## ③ Bypass Options

No bypass	<b>0</b>
0,2 bar / 3 PSI	<b>B0.2</b>
1,7 bar / 25 PSI	<b>B1.7</b>

Note: Other settings available on request.

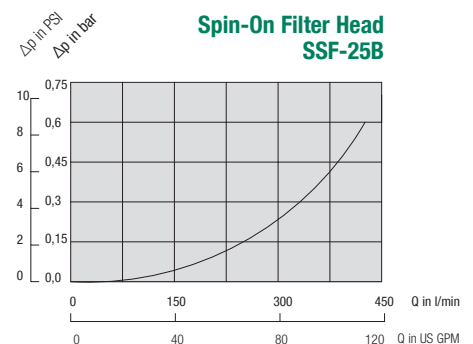
## ④ Clogging Indicator Port Options

All clogging indicator ports drilled	<b>4</b>
Special	<b>9</b>

Note: Standard clogging indicator port is G1/8.

## ⑤ Design Code

Only for information	<b>X</b>
----------------------	----------



## Double Spin-On Filter Heads ■ SSF-25FM

### Dimensions



### Technical Data

#### Construction

- In-line Double Spin-On filter head

#### Material

- Aluminium

#### Port Connections

- SAE flange

#### Flow Rate

- 454 l/min / 120 US GPM for Return-Line application
- 132 l/min / 35 US GPM for Suction-Line application

#### Operating Pressure

- Max. 12 bar / 174 PSI
- Max. 5 bar / 72.5 PSI differential pressure (for any application without bypass valve)

#### Temperature Range

- -30 °C ... +100 °C / -22 °F ... +212 °F

#### Media Compatibility

- Mineral oils, other fluids on request

### Options and Accessories



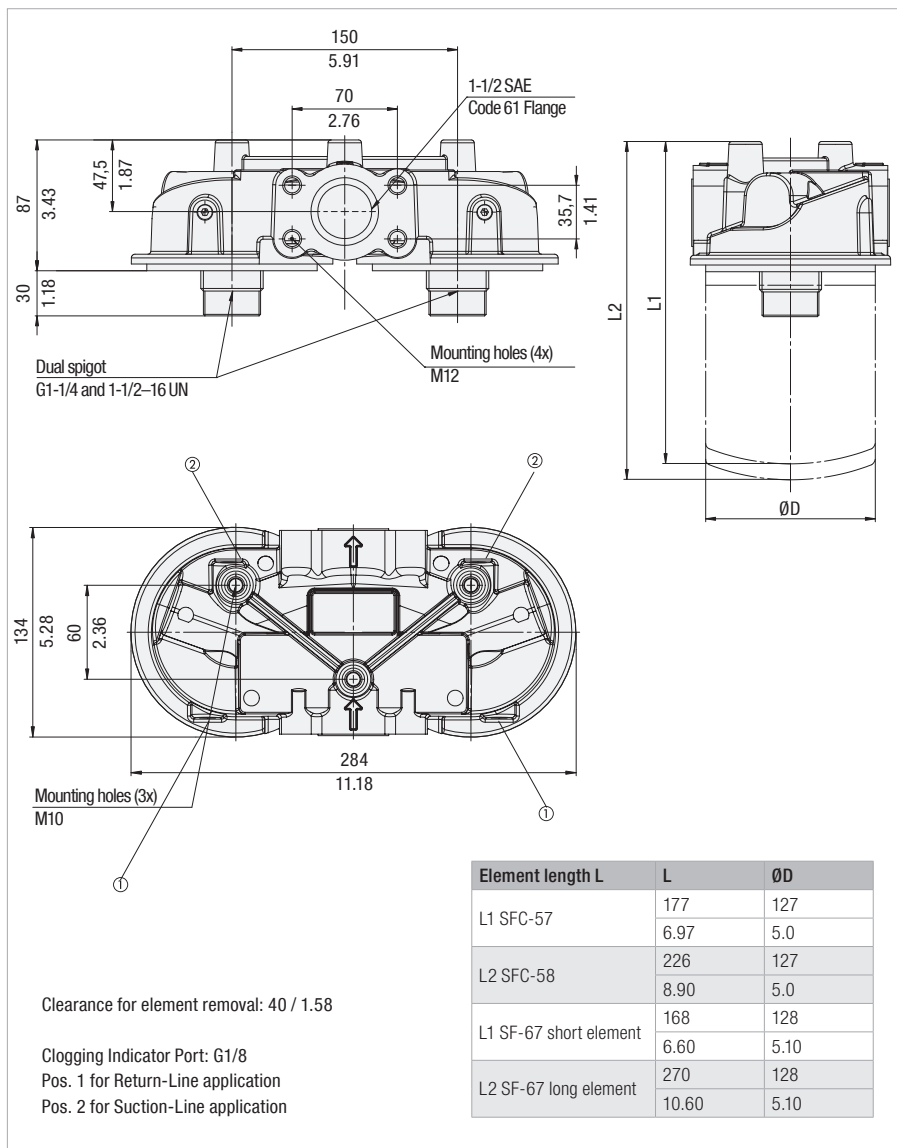
- For use with SF-67 and SFC-57/58 series elements  
For element types with seal contour type A and B  
For element types and flow characteristics see page 176 for SF-67 and page 174 for SFC-57/58  
The element is not part of the scope of delivery

#### Valve

- Bypass valve (integrated in the head): Optional

#### Clogging Indicators

- For clogging indicator types see page 177



Dimensions in mm / in

### Order Code



①

②

③

④

#### ① Type

Double Spin-On Filter Head **SSF**

#### ② Connection Style

Connection	Thread	Code
SAE Flange	1-1/2 SAE Code 61 Flange	<b>25FM</b>

#### ③ Bypass Options

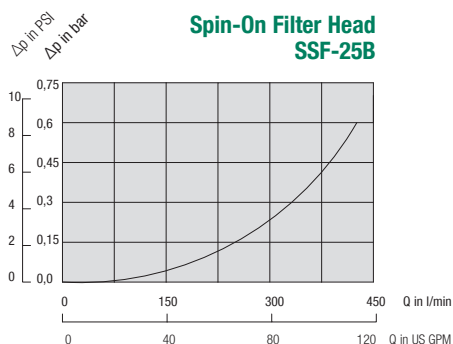
No bypass	<b>0</b>
0,2 bar / 3 PSI	<b>B0.2</b>
1,7 bar / 25 PSI	<b>B1.7</b>

Note: Other settings available on request.

#### ④ Clogging Indicator Port Options

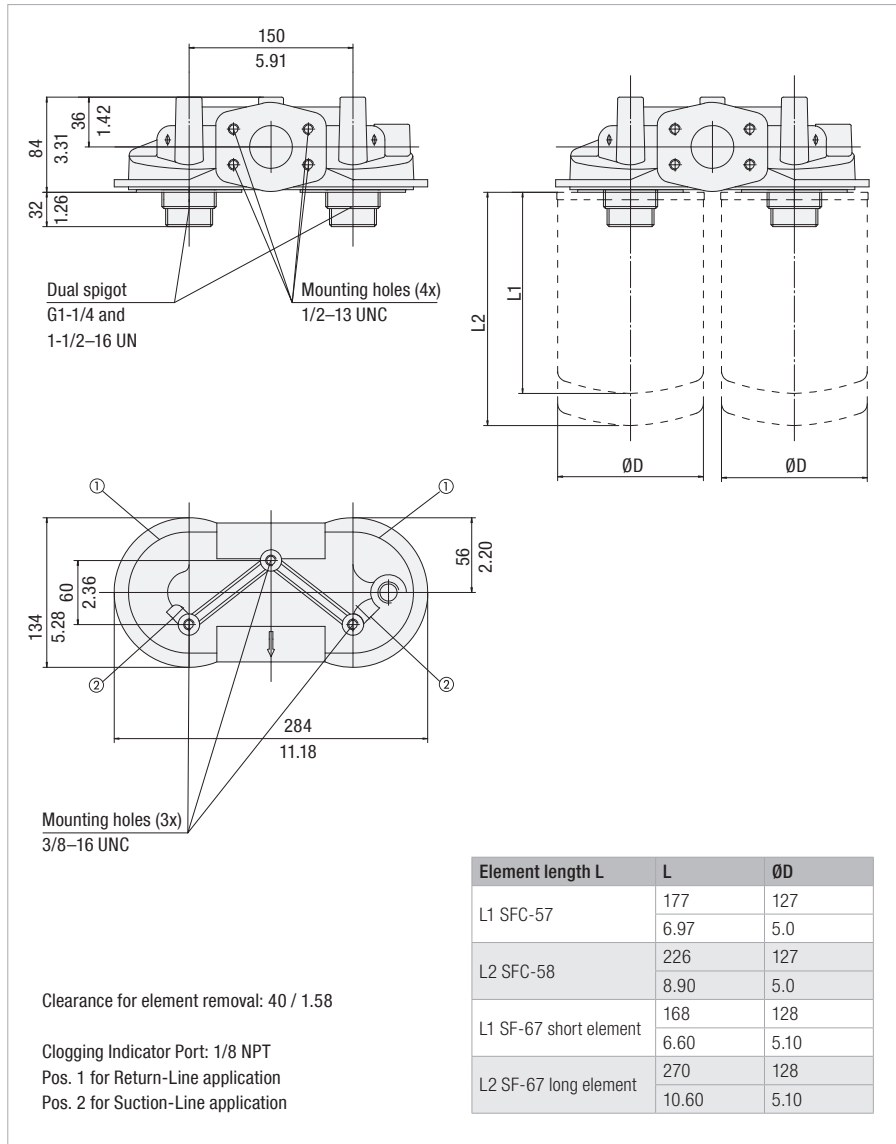
All clogging indicator ports drilled	<b>4</b>
Special	<b>9</b>

Note: Standard clogging indicator port is G1/8.

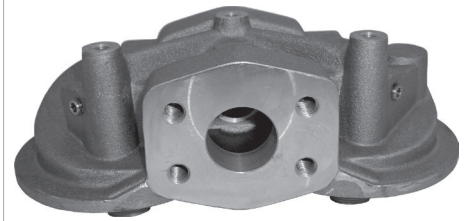


## Double Spin-On Filter Heads ■ SSF-25

## Dimensions



Dimensions in mm / in



## Technical Data

## Construction

- In-line Double Spin-On filter head

## Material

- Aluminium

## Port Connections

- NPT
- SAE flange

## Flow Rate

- 454 l/min / 120 US GPM for Return-Line application
- 132 l/min / 35 US GPM for Suction-Line application

## Operating Pressure

- Max. 12 bar / 174 PSI
- Max. 5 bar / 72.5 PSI differential pressure (for any application without bypass valve)

## Temperature Range

- 30 °C ... +100 °C / -22 °F ... +212 °F

## Media Compatibility

- Mineral oils, other fluids on request

## Options and Accessories



## Filter Elements

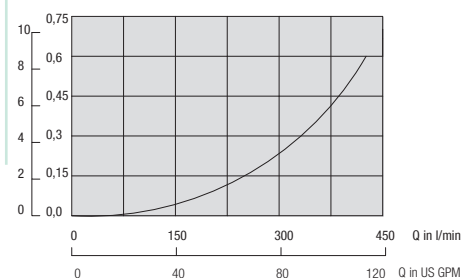
- For use with SF-67 and SFC-57/58 series elements
- For element types with seal contour type A and B
- For element types and flow characteristics see page 176 for SF-67 and page 174 for SFC-57/58
- The element is not part of the scope of delivery

## Valve

- Bypass valve (integrated in the head): Optional

## Clogging Indicators

- For clogging indicator types see page 177

 Spin-On Filter Head  
SSF-25


## Order Code

**SSF** - **25** - **B1.7** - **O**

①      ②      ③      ④

## ① Type

Double Spin-On Filter Head **SSF**

## ② Connection Style

Connection	Thread	Code
NPT and SAE Flange	1-1/2 and 2 SAE Code 61 Flange	<b>25</b>

## ③ Bypass Options

No bypass	<b>0</b>
0,2 bar / 3 PSI	<b>B0.2</b>
0,35 bar / 5 PSI	<b>B0.35</b>
1 bar / 15 PSI	<b>B1</b>
1,7 bar / 25 PSI	<b>B1.7</b>

## ④ Clogging Indicator Port Options

No clogging indicator port	<b>0</b>
Clogging indicator port drilled for Return-Line application	<b>1</b>
Clogging indicator port drilled for Suction-Line application	<b>2</b>
All clogging indicator ports drilled	<b>4</b>
Special	<b>9</b>

Note: Standard clogging indicator port is 1/8 NPT.





Tank Top Spin-On Filter Heads - SSFT-12B

Dimensions



Technical Data

Construction

- Tank Top Spin-On filter head

Material

- Aluminium

Port Connections

- BSP

Flow Rate

- 75 l/min / 20 US GPM

Operating Pressure

- Max. 7 bar / 100 PSI

Temperature Range

- 30 °C ... +100 °C / -22 °F ... +212 °F

Media Compatibility

- Mineral oils, other fluids on request

Options and Accessories



Filter Elements

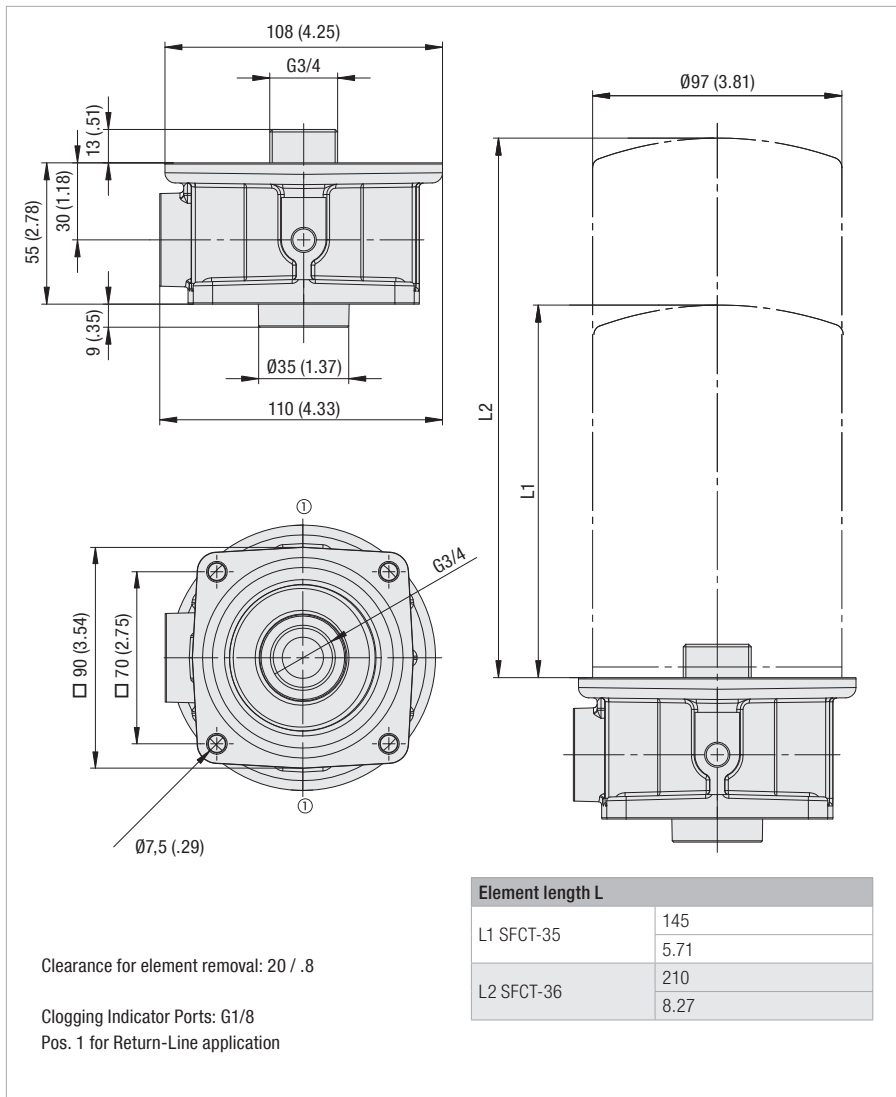
- For use with SFCT-35/36 series elements
- For element types with seal contour type A and B
- For element types and flow characteristics see 174
- The element is not part of the scope of delivery

Valve

- Bypass valve 1,7 bar / 25 PSI integrated in the filter element

Clogging Indicators

- For clogging indicator types see page 177



Dimensions in mm / in

Order Code

**SSFT - 12B - 1**

① ② ③

① Type

Spin-On Filter Head **SSFT**

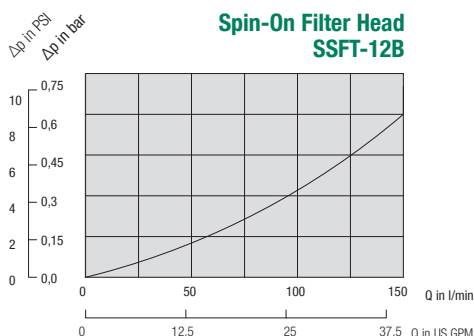
② Connection Style

Connection	Thread	Code
BSP	3/4	<b>12B</b>

③ Clogging Indicator Port Options

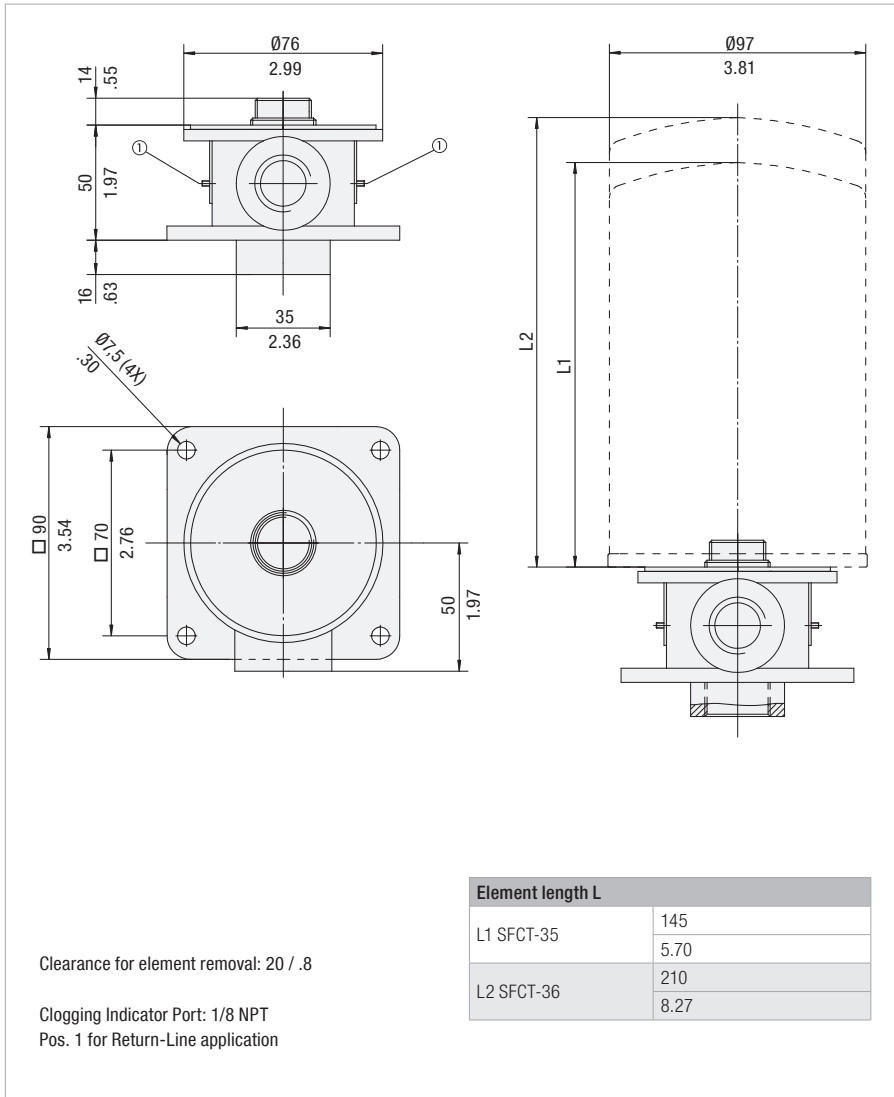
Clogging indicator port drilled for Return-Line application	<b>1</b>
Special	<b>9</b>

Note: Standard clogging indicator port is G1/8.

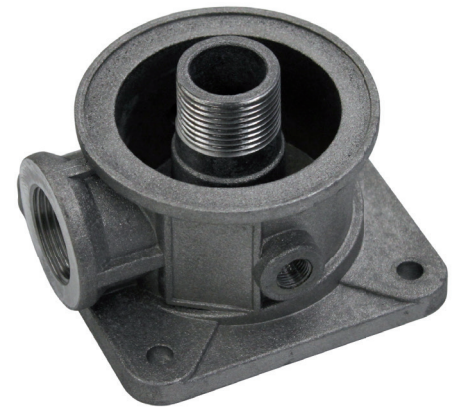


## Tank Top Spin-On Filter Heads ■ SSFT-12

## Dimensions



Dimensions in mm / in



## Technical Data

**Construction**

- Tank Top Spin-On filter head

**Material**

- Aluminium

**Port Connections**

- NPT

**Flow Rate**

- 75 l/min / 20 US GPM

**Operating Pressure**

- Max. 7 bar / 100 PSI

**Temperature Range**

- -30 °C ... +100 °C / -22 °F ... +212 °F

**Media Compatibility**

- Mineral oils, other fluids on request

## Options and Accessories


**Filter Elements**

- For use with SFCT-35/36 series elements
- For element types with seal contour type A and B
- For element types and flow characteristics see page 174
- The element is not part of the scope of delivery

**Valve**

- Bypass valve 1,7 bar / 25 PSI integrated in the filter element

**Clogging Indicators**

- For clogging indicator types see page 177

## Order Code

**SSFT** - **12** - **1**

①                      ②                      ③

## ① Type

 Spin-On Filter Head **SSFT**

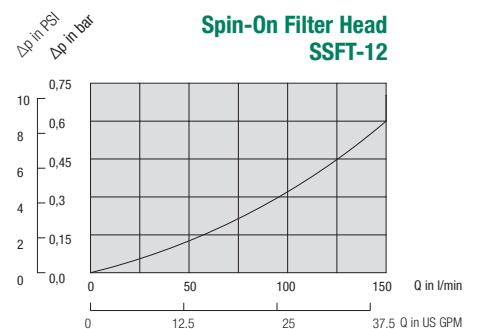
## ② Connection Style

Connection	Thread	Code
NPT	3/4	12

## ③ Clogging Indicator Port Options

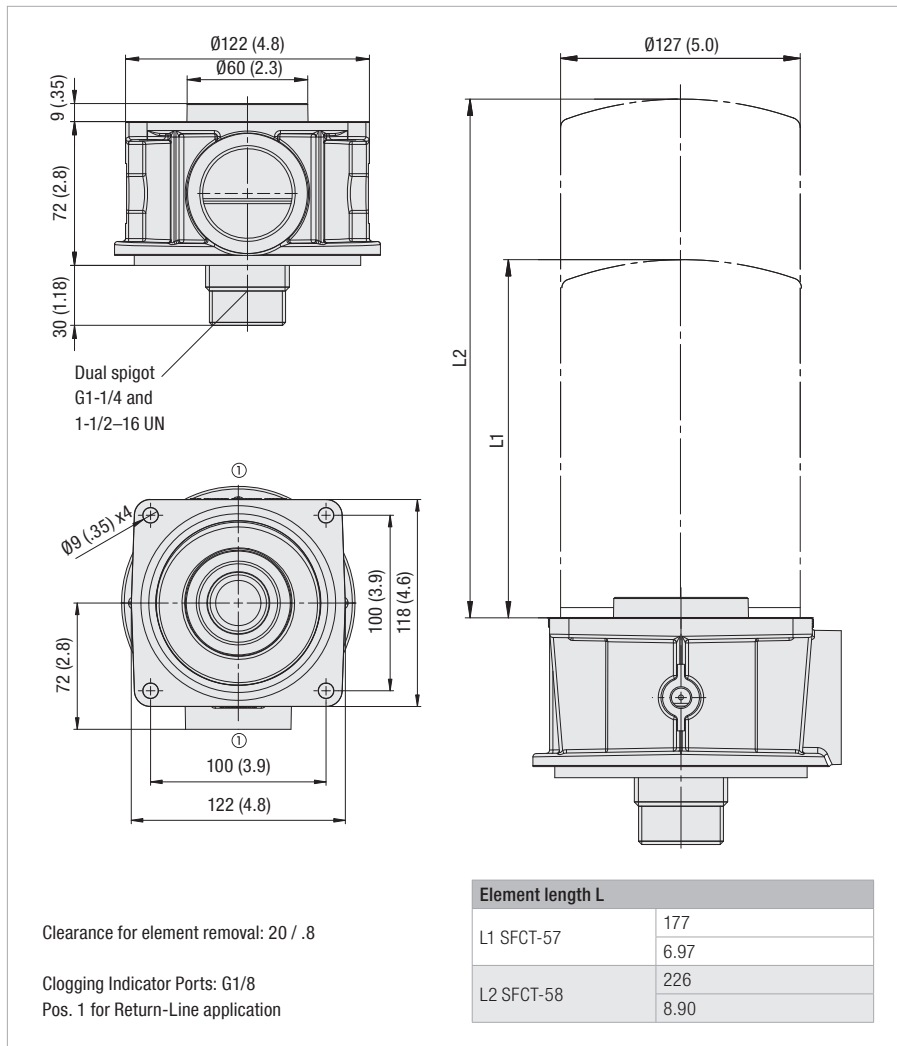
No clogging indicator port	0
Clogging indicator port drilled for Return-Line application	1
Special	9

Note: Standard clogging indicator port is 1/8 NPT.



## Tank Top Spin-On Filter Heads - SSFT-20B

### Dimensions



Dimensions in mm / in

### Technical Data

#### Construction

- Tank Top Spin-On filter head

#### Material

- Aluminium

#### Port Connections

- BSP

#### Flow Rate

- 200 l/min / 53 US GPM

#### Operating Pressure

- Max. 7 bar / 100 PSI

#### Temperature Range

- 30 °C ... +100 °C / -22 °F ... +212 °F

#### Media Compatibility

- Mineral oils, other fluids on request

### Options and Accessories



#### Filter Elements

- For use with SFCT-57/58 series elements
- For element types with seal contour type A
- For element types and flow characteristics see page 174
- The element is not part of the scope of delivery

#### Valve

- Bypass valve 1,7 bar / 25 PSI integrated in the filter element

#### Clogging Indicators

- For clogging indicator types see page 177

### Order Code

**SSFT - 20B - 1**

①      ②      ③

#### ① Type

Spin-On Filter Head      **SSFT**

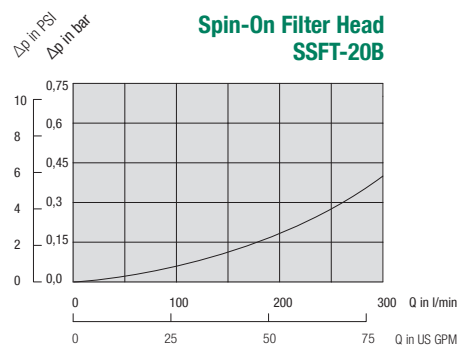
#### ② Connection Style

Connection	Thread	Code
BSP	1-1/2	<b>20B</b>

#### ③ Clogging Indicator Port Options

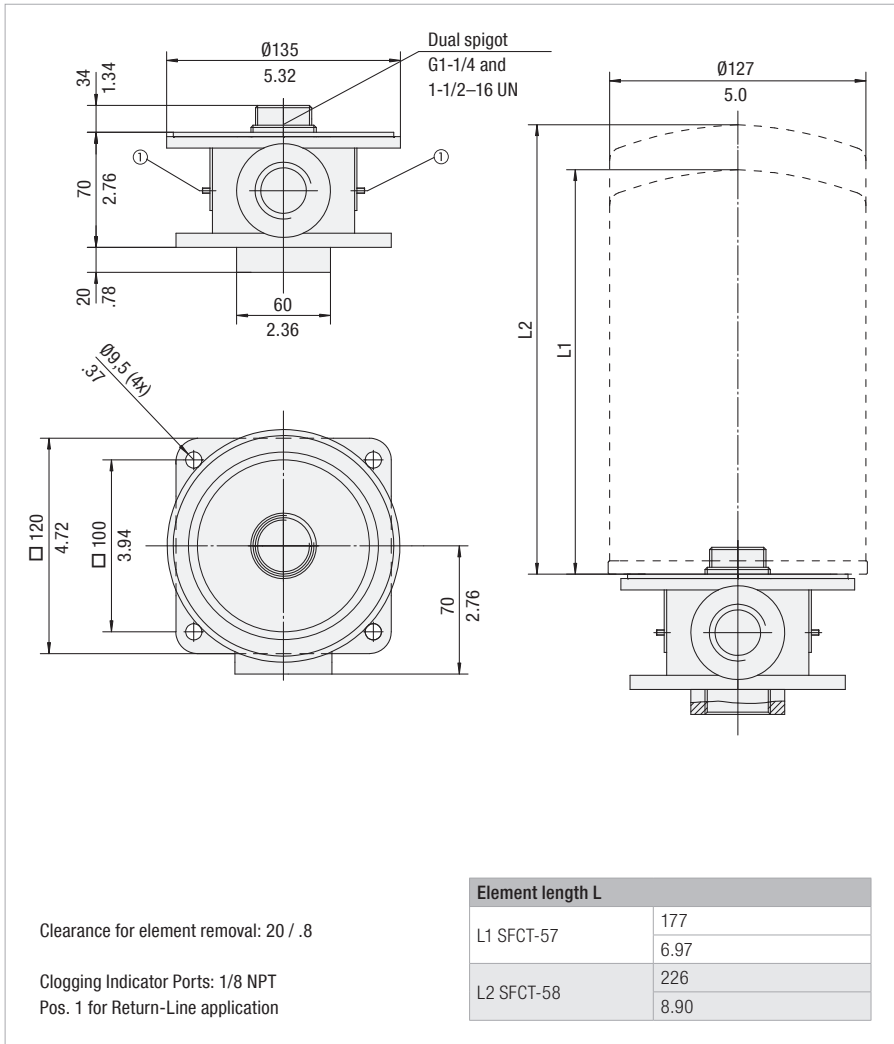
Clogging indicator port drilled for Return-Line application	<b>1</b>
Special	<b>9</b>

Note: Standard clogging indicator port is G1/8.



## Tank Top Spin-On Filter Heads ■ SSFT-20

## Dimensions



Dimensions in mm / in



## Technical Data

**Construction**

- Tank Top Spin-On filter head

**Material**

- Aluminium

**Port Connections**

- NPT

**Flow Rate**

- 200 l/min / 53 US GPM

**Operating Pressure**

- Max. 7 bar / 100 PSI

**Temperature Range**

- -30 °C ... +100 °C / -22 °F ... +212 °F

**Media Compatibility**

- Mineral oils, other fluids on request

## Options and Accessories


**Filter Elements**

- For use with SFCT-57/58 series elements
- For element types with seal contour type A
- For element types and flow characteristics see page 174
- The element is not part of the scope of delivery

**Valve**

- Bypass valve 1,7 bar / 25 PSI integrated in the filter element

**Clogging Indicators**

- For clogging indicator types see page 177

## Order Code

SSFT - 20 - 1  
1    2    3

**① Type**

Spin-On Filter Head	<b>SSFT</b>
---------------------	-------------

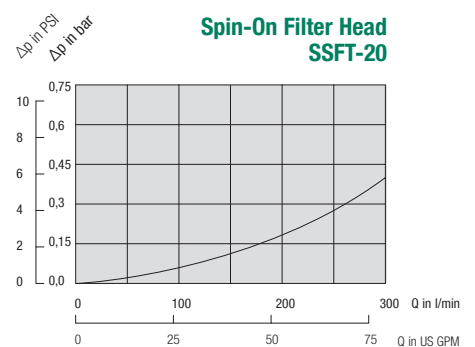
**② Connection Style**

Connection	Thread	Code
NPT	1-1/2	<b>20</b>

**③ Clogging Indicator Port Options**

No clogging indicator port	<b>0</b>
Clogging indicator port drilled for Return-Line application	<b>1</b>
Special	<b>9</b>

Note: Standard clogging indicator port is 1/8 NPT.



## Spin-On Filter Elements

### Description

STAUFF offers a wide range of Spin-On filter heads and Spin-On filter elements.

#### Sealing Material

- NBR (Buna-N®)

#### Media Compatibility

- Mineral oils, other fluids on request

#### Temperature Range

- -30 °C ... +100 °C / -22 °F ... +212 °F

#### Filter Materials

- Wire Mesh, Brass Mesh, Filter Paper, Inorganic Glass Fibre, Stainless Wire Mesh and Water Absorbing Filter Material

### Options and Accessories

#### Valves

- Filter elements type SFCT have an internal bypass and anti-drain back diaphragm

F



#### Types SFC-35/36, SFCT-35/36

- Use with Spin-On filter heads SSF-12, SSFT-12 and SSFT-12B
- Connection thread: G3/4
- Operating pressure: SFC: max. 12 bar / 174 PSI  
SFCT: max 7 bar / 100 PSI
- Differential Pressure: SFC: max. 4 bar / 58 PSI  
SFCT: max. 3 bar / 43,5 PSI
- Burst Pressure: SFC: min. 25 bar / 363 PSI  
SFCT: min 21 bar / 305 PSI



#### Types SFC-57/58, SFCT-57/58

- Use with Spin-On filter heads SSF-20L/100/120/120L/130/160 SSF-24B/24N/24S/25B/25FM/25 and SSFT-20B/20
- Connection thread: G1-1/4
- Operating pressure: SFC: max. 12 bar / 174 PSI  
SFCT: max 7 bar / 100 PSI
- Differential Pressure: SFC: max. 4 bar / 58 PSI  
SFCT: max. 3 bar / 43,5 PSI
- Burst Pressure: SFC: min. 25 bar / 363 PSI  
SFCT: min 21 bar / 305 PSI



#### Type SF-63

- Use with Spin-On filter head SLF
- Connection thread: 3/4–16 UNF
- Operating pressure: max. 14 bar / 200 PSI
- Differential Pressure: max. 5,5 bar / 80 PSI
- Burst Pressure: min. 20 bar / 290 PSI



#### Type SF-65

- Use with Spin-On filter head SAF
- Connection thread: 1–12 UNF
- Operating pressure: max. 14 bar / 200 PSI
- Differential Pressure: max. 5,5 bar / 80 PSI
- Burst Pressure: min. 20 bar / 290 PSI



#### Type SF-67

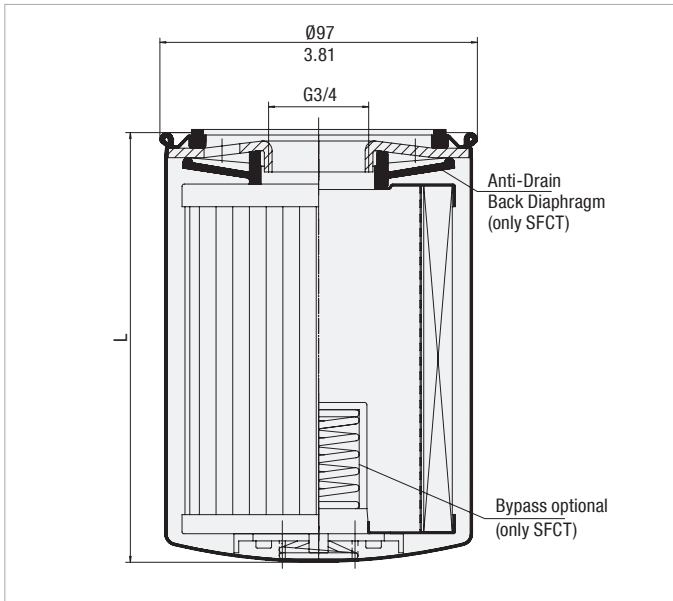
- Use with Spin-On filter heads SSF-20L/100/120/120L/130/150/160/180 SSF-24B/24N/24S/25B/25FM/25
- Connection thread: 1/2–16 UNF
- Operating pressure: max. 14 bar / 200 PSI
- Differential Pressure: max. 5,5 bar / 80 PSI
- Burst Pressure: min. 20 bar / 290 PSI



#### Private Labelling

- On request, the filter elements can be printed with a private label



**Spin-On Filter Elements - Type SFC-35 / 36 and SFCT-35 / 36**


Dimensions in mm / in


**Product Description**

STAUFF SFC-35/36 series Spin-On Elements are used with the STAUFF SSF-12 Spin-On Filters with G3/4 threaded ports.

STAUFF SFCT-35/36 series Spin-On Elements have an internal 1,7 bar / 25 PSI bypass and anti-drain back diaphragm for use with STAUFF SSFT-12 and SSFT-12B Tank Top Spin-On Filters.

**Technical Data**
**Connection Thread**

- G3/4

**Operating Pressure**

- Max. 12 bar / 174 PSI

**Burst Pressure**

- Min. 20 bar / 290 PSI

**Temperature Range**

- -30 °C ... +100 °C / -22 °F ... +212 °F

**Seal Contour**

- Type A (see page 151)

**Differential Pressure**

- Paper: Max. 5 bar / 72.5 PSI  
Glass Fibre / Wire Mesh: Max. 10 bar / 145 PSI  
(for any application without bypass valve)

**Bypass Pressure**

- 1,7 bar / 25 PSI (only SFCT-series)

**Media Compatibility**

- Mineral oils, other fluids on request

**Sealing Material**

- NBR (Buna-N®)

**Dimensions**

Order Code	Filter Paper				Inorganic Glass Fibre					
	SFC-3510-E	SFC-3610-E	SFC-3525-E	SFC-3625-E	SFC-3503-AE	SFC-3603-AE	SFC-3510-AE	SFC-3610-AE	SFC-3525-AE	SFC-3625-AE
Element without bypass valve	SFC-3510-E	SFC-3610-E	SFC-3525-E	SFC-3625-E	SFC-3503-AE	SFC-3603-AE	SFC-3510-AE	SFC-3610-AE	SFC-3525-AE	SFC-3625-AE
Element with bypass valve	SFCT-3510-E	SFCT-3610-E	SFCT-3525-E	SFCT-3625-E			SFCT-3510-AE	SFCT-3610-AE	SFCT-3525-AE	SFCT-3625-AE
Length L (mm/in)	145 5.7	210 8.27	145 5.7	210 8.27	145 5.7	210 8.27	145 5.7	210 8.27	145 5.7	210 8.27
β-Ratio	$\beta_{10} \geq 2$	$\beta_{10} \geq 2$	$\beta_{25} \geq 2$	$\beta_{25} \geq 2$	$\beta_3 \geq 200$	$\beta_3 \geq 200$	$\beta_{10} \geq 200$	$\beta_{10} \geq 200$	$\beta_{25} \geq 200$	$\beta_{25} \geq 200$
Carton Quantity	1	1	1	1	1	1	1	1	1	1
Carton Weight (kg/lbs)	0,9 2	1,3 2,6	0,9 2	1,3 2,6	0,9 2	1,3 2,6	0,9 2	1,3 2,6	0,9 2	1,3 2,6

Order Code	Wire Mesh		Brass Mesh	
	SFC-3560-E	SFC-3660-E	SFC-35125-E	SFC-36125-E
Element without bypass valve	SFC-3560-E	SFC-3660-E	SFC-35125-E	SFC-36125-E
Element with bypass valve	-	-	-	-
Length L (mm/in)	145 5.7	210 8.27	145 5.7	210 8.27
β-Ratio	n/a	n/a	n/a	n/a
Carton Quantity	1	1	1	1
Carton Weight (kg/lbs)	0,9 2	1,3 2,6	0,9 2	1,3 2,6



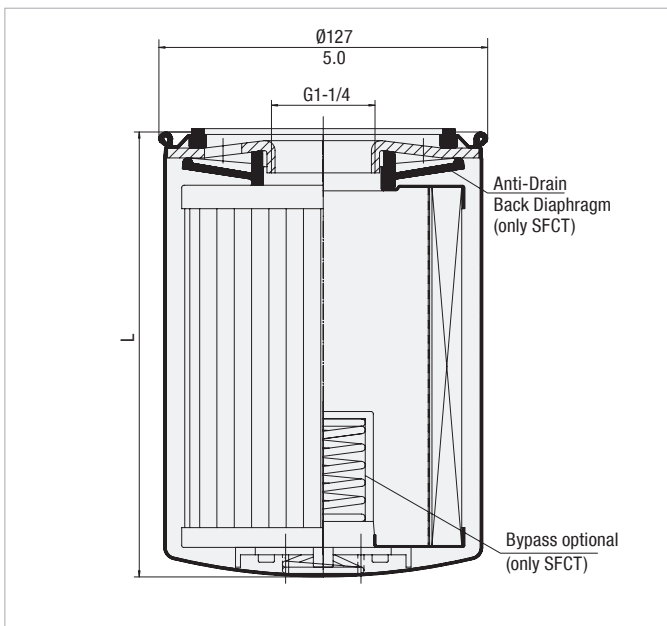
Spin-On Elements ▪ Type SFC-57 / 58 and SFCT-57 / 58



Product Description

STAUFF Spin-On Filter Elements of the SFC-/SFCT-57/58 series are used with the STAUFF SSF-20L/100/120/120L/130/160 and SSF-24B/24N/24S/25B/25FM/25 series Spin-On Filters with G1-1/4 threaded ports.

STAUFF SFCT-57/58 series Spin-On Elements have an internal 1,7 bar / 25 PSI bypass and anti-drain back diaphragm for use with STAUFF SSFT-20B/20 Tank Top Spin-On Filters.



Dimensions in mm / in

F

Technical Data

Connection Thread

- G1-1/4

Operating Pressure

- Max. 12 bar / 174 PSI

Burst Pressure

- Min. 17 bar / 247 PSI

Temperature Range

- -30 °C ...+100 °C / -22 °F ... +212 °F

Seal Contour

- Type A (see page 151)

Differential Pressure

- Paper: Max. 5 bar / 72.5 PSI  
Glass Fibre / Wire Mesh:  
Max. 10 bar / 145 PSI  
(for any application without bypass valve)

Bypass Pressure

- 1,7 bar / 25 PSI  
(only SFCT-series)

Media Compatibility

- Mineral oils, other fluids on request

Sealing Material

- NBR (Buna-N®)

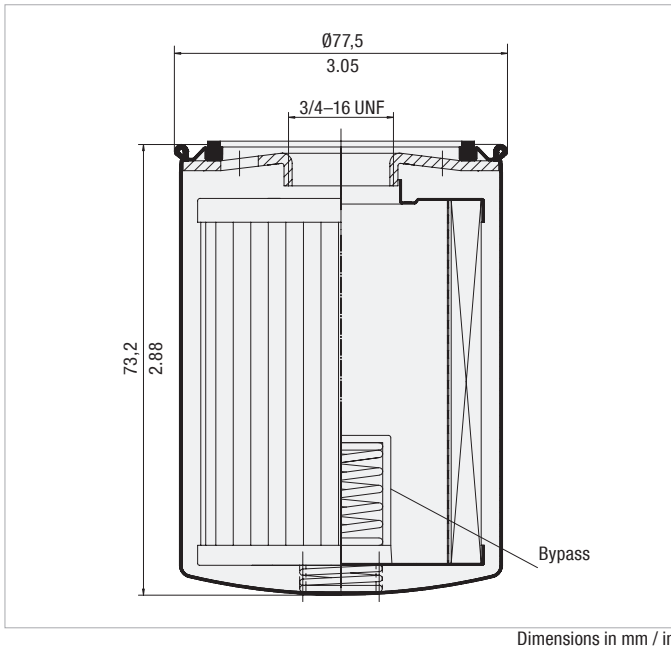
Dimensions

Order Code	Filter Paper				Inorganic Glass Fibre					
	SFC-5710-E	SFC-5810-E	SFC-5725-E	SFC-5825-E	SFC-5703-AE	SFC-5803-AE	SFC-5710-AE	SFC-5810-AE	SFC-5725-AE	SFC-5825-AE
Element without bypass valve	SFC-5710-E	SFC-5810-E	SFC-5725-E	SFC-5825-E	-	-	SFC-5710-AE	SFC-5810-AE	SFC-5725-AE	SFC-5825-AE
Element with bypass valve	SFCT-5710-E	SFCT-5810-E	SFCT-5725-E	SFCT-5825-E	-	-	SFCT-5710-AE	SFCT-5810-AE	SFCT-5725-AE	SFCT-5825-AE
Length L (mm/in)	177 6.97	226 8.9	177 6.97	226 8.9	177 6.97	226 8.9	177 6.97	226 8.9	177 6.97	226 8.9
β-Ratio	$\beta_{10} \geq 2$	$\beta_{10} \geq 2$	$\beta_{25} \geq 2$	$\beta_{25} \geq 2$	$\beta_3 \geq 200$	$\beta_3 \geq 200$	$\beta_{10} \geq 200$	$\beta_{10} \geq 200$	$\beta_{25} \geq 200$	$\beta_{25} \geq 200$
Carton Quantity	1	1	1	1	1	1	1	1	1	1
Carton Weight (kg/lbs)	1,4 3	1,85 4	1,4 3	1,85 4	1,4 3	1,85 4	1,4 3	1,85 4	1,4 3	1,85 4

Order Code	Wire Mesh		Brass Mesh	
	SFC-5760-E	SFC-5860-E	SFC-57125-E	SFC-58125-E
Element without bypass valve	SFC-5760-E	SFC-5860-E	SFC-57125-E	SFC-58125-E
Element with bypass valve	-	-	-	-
Length L (mm/in)	177 6.97	226 8.9	177 6.97	226 8.9
β-Ratio	n/a	n/a	n/a	n/a
Carton Quantity	1	1	1	1
Carton Weight (kg/lbs)	0,9 2	1,3 2,6	0,9 2	1,3 2,6



## Spin-On Elements ▪ Type SF-63



## Product Description

STAUFF SF-63-series Spin-On Elements are used with the STAUFF SLF Spin-On Filters.

F

## Technical Data

**Connection Thread**

- 3/4-16 UNF

**Seal Contour**

- Type A (see page 151)

**Sealing Material**

- NBR (Buna-N®)

**Operating Pressure**

- Max. 14 bar / 200 PSI

**Differential Pressure**

- Max. 5,5 bar / 80 PSI  
(for any application without bypass valve)

**Burst Pressure**

- Min. 20 bar / 290 PSI

**Bypass Pressure**

- SF-6310-18 1,24 bar / 18 PSI
- SF-6325-10 0,70 bar / 10 PSI

**Temperature Range**

- -30 °C ... +100 °C / -22 °F ... +212 °F

**Media Compatibility**

- Mineral oils, other fluids on request

## Dimensions

Order Code	Filter Paper	
	SF-6310-18	SF-6325-10
β-Ratio	$\beta_{10} \geq 2$	$\beta_{25} \geq 2$
Dirt Holding Capacity (g)	6	6
Carton Quantity	12	12
Carton Weight (kg/lbs)	3,6	3,6
	8	8



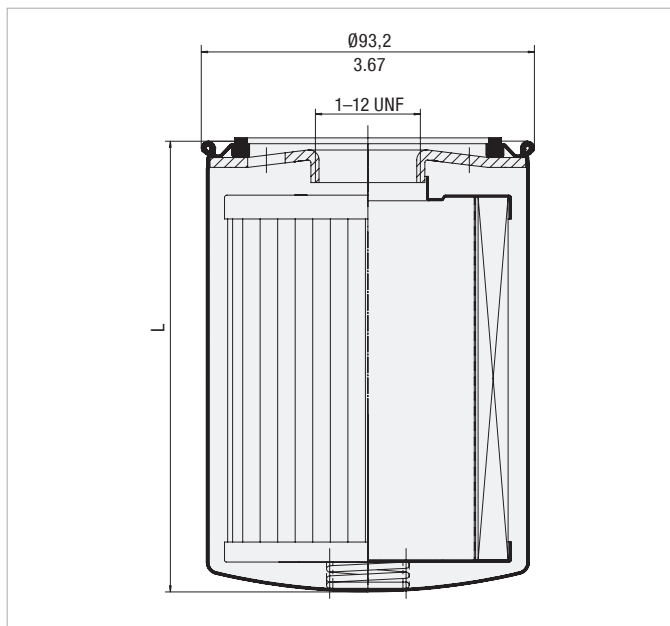


## Spin-On Elements ▪ Type SF-65



### Product Description

STAUFF SF-65-series Spin-On Elements are used with the STAUFF SAF series Spin-On Filters.



Dimensions in mm / in

F

### Technical Data

#### Connection Thread

- 1-12 UNF

#### Seal Contour

- Type A (see page 151)

#### Sealing Material

- NBR (Buna-N®)

#### Operating Pressure

- Max. 14 bar / 200 PSI
- SF-6520-W: Max. 7 bar / 101.5 PSI

#### Differential Pressure

- Max. 5.5 bar / 80 PSI  
(for any application without bypass valve)

#### Burst Pressure

- Min. 20 bar / 290 PSI

#### Temperature Range

- -30 °C ... +100 °C / -22 °F ... +212 °F

#### Media Compatibility

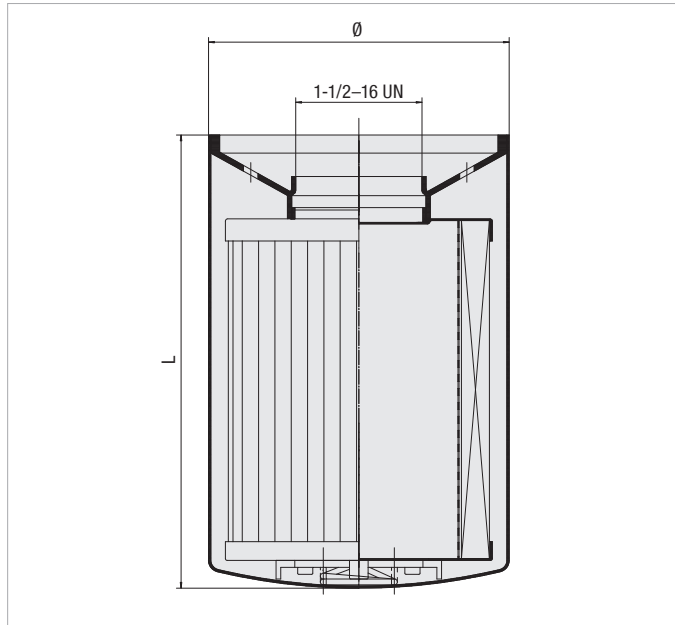
- Mineral oils, other fluids on request

### Dimensions

Order Code	Filter Paper				Inorganic Glass Fibre			Water Absorbing
	SF-6520	SF-6521	SF-6510	SF-6511	SF-6549	SF-6505	SF-6504	SF-6520-W
Length L (mm/in)	147 5.76	204 8.00	147 5.76	204 8.00	147 5.76	147 5.76	147 5.76	133 5.25
β-Ratio	β <sub>10</sub> ≥ 2	β <sub>10</sub> ≥ 2	β <sub>25</sub> ≥ 2	β <sub>25</sub> ≥ 2	β <sub>3</sub> ≥ 200	β <sub>12</sub> ≥ 200	β <sub>25</sub> ≥ 200	β <sub>10</sub> ≥ 2
Dirt Holding Capacity ACFTD (g)	14.4	22	20.4	31.2	19	11	26	Water holding capacity 162 ml 5.5 oz
Carton Quantity	12	12	12	12	12	12	12	12
Carton Weight (kg/lbs)	6,3 13.9	8,4 18.5	6,4 14.2	8,8 19.4	8,6 19	8,6 19	8,6 19	8,6 19



## Spin-On Elements ▪ Type SF-67



Dimensions in mm / in



## Product Description

STAUFF SF-67-series Spin-On Elements are used with the STAUFF SSF-20L/100/120/120L/130/150/160/180 and SSF-24B/24N/24S/25B/25FM/25 Spin-On Filters.

## Technical Data

## Connection Thread

- 1-1/2-16 UN

## Seal Contour

- Type B (see page 151)

## Sealing Material

- NBR (Buna-N®)

## Operating Pressure

- Max. 14 bar / 200 PSI
- SF-6721-W: Max. 7 bar / 101.5 PSI

## Differential Pressure

- Max. 5.5 bar / 80 PSI
- (for any application without bypass valve)

## Burst Pressure

- Min. 20 bar / 290 PSI

## Temperature Range

- -30 °C ... +100 °C / -22 °F ... +212 °F

## Media Compatibility

- Mineral oils, other fluids on request

## Dimensions

Order Code	Inorganic Glass Fibre								
	SF-6702-MG	SF-6703-MG	SF-6704-MG	SF-6706-MG	SF-6707-MG	SF-6730-MG	SF-6731-MG	SF-6728-MG	SF-6726-MG
Length L (mm/in)	270 10.6	168 6.6	270 10.6	168 6.6	270 10.6	168 6.6	270 10.6	168 6.6	270 10.6
Diameter Ø (mm/in)	129 5.08	129 5.08	129 5.08	129 5.08	129 5.08	129 5.08	129 5.08	129 5.08	129 5.08
β-Ratio	$\beta_1 \geq 200$	$\beta_3 \geq 200$	$\beta_3 \geq 200$	$\beta_6 \geq 200$	$\beta_6 \geq 200$	$\beta_{12} \geq 200$	$\beta_{12} \geq 200$	$\beta_{25} \geq 200$	$\beta_{25} \geq 200$
Dirt Holding Capacity ACFTD (g)	30	31	47	35	54	38	59	50	76
Carton Quantity	6	6	6	6	6	6	6	6	6
Carton Weight (kg/lbs)	11,8 26.1	8,2 18	11,8 26.1	8,2 18	11,8 26.1	8,2 18	11,8 26.1	8,2 18	11,8 26.1

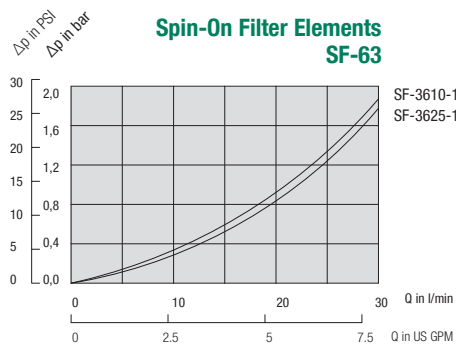
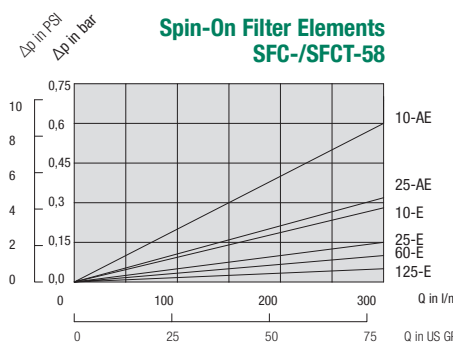
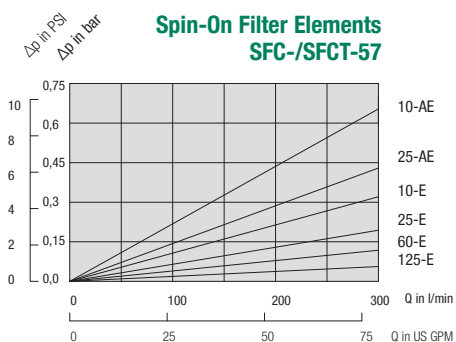
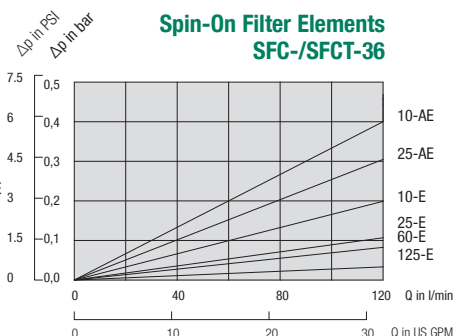
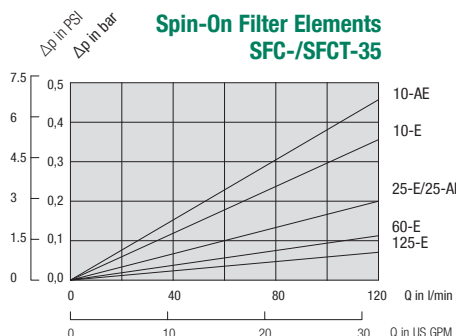
Order Code	Filter Paper				Stainless Wire Mesh		Water Absorbing
	SF-6720	SF-6721	SF-6710	SF-6711	SF-6790	SF-6791	SF-6721-W
Length L (mm/in)	168 6.6	270 10.6	168 6.6	270 10.6	168 6.6	270 10.6	270 10.6
Diameter Ø (mm/in)	128,5 5.06	128,5 5.06	128,5 5.06	128,5 5.06	128,5 5.06	128,5 5.06	128,5 5.06
β-Ratio	$\beta_{10} \geq 2$	$\beta_{10} \geq 2$	$\beta_{25} \geq 2$	$\beta_{25} \geq 2$	n/a	n/a	$\beta_{10} \geq 2$
Dirt Holding Capacity ACFTD (g)	34	62	34	62	n/a	n/a	Water holding capacity 444 ml / 15 oz
Carton Quantity	6	6	6	6	6	6	6
Carton Weight (kg/lbs)	6,6 14.6	7,9 17.5	6,7 14.9	9,3 20.6	8,2 18	11,8 26.1	11,8 26.1



### Spin-On Elements ▪ Type SFC/SFCT-35/36, SFC/SFCT-57/58 and SF-63

The following characteristics are valid for mineral oils with a density of 0,85 kg/dm<sup>3</sup> and the kinematic viscosity of 30 mm<sup>2</sup>/s (30 cSt). The characteristics have been determined in accordance to ISO 3968. SFC-35/36 series Spin-On Elements are used with STAUFF SSF-12 Spin-On Filters, SFCT-35/36 series Spin-On Elements are used with STAUFF SSFT-12 Spin-On Filters, SFC-57/58 series Spin-On Elements are used with STAUFF SSF-20/24/25/100/120/130/160 Spin-On Filters, SFCT-57/58 series Spin-On Elements are used with STAUFF SSFT-20 Spin-On Filters and SF-63 series Spin-On Elements are used with STAUFF SLF-02/03/04 Spin-On Filters.

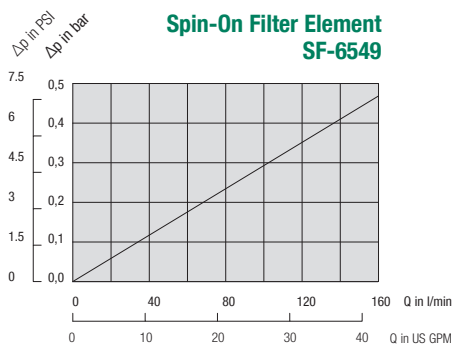
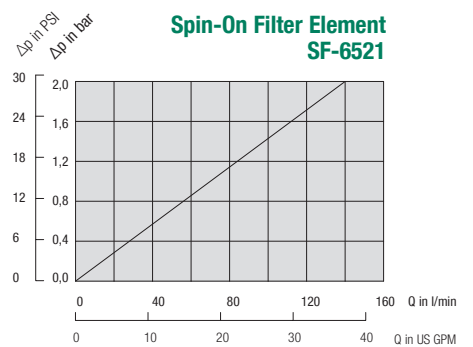
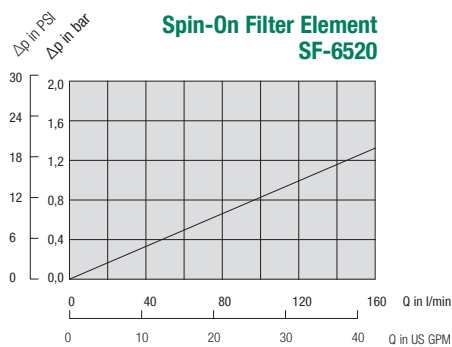
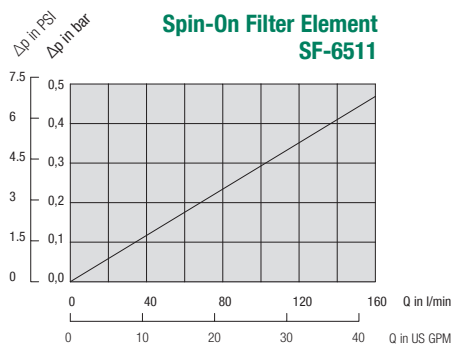
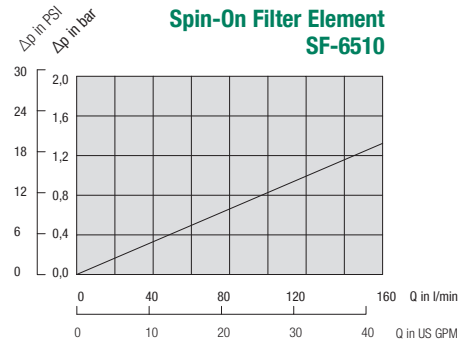
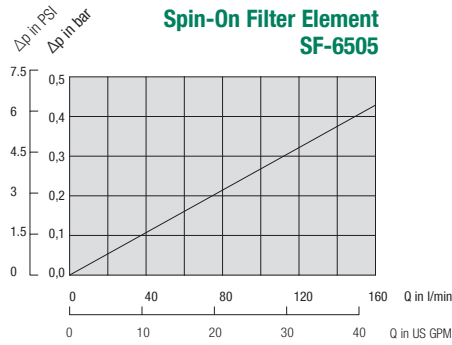
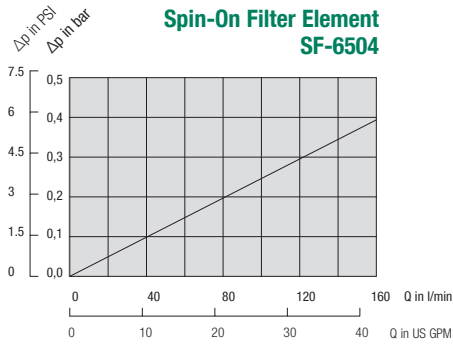
F



## Spin-On Elements ■ Type SF-65

The following characteristics are valid for mineral oils with a density of 0,85 kg/dm<sup>3</sup> and the kinematic viscosity of 30 mm<sup>2</sup>/s (30 cSt).

The characteristics have been determined in accordance to ISO 3968. SF-65 Spin-On Elements are used with the STAUFF SAF-05/06/07/10/11/13 Spin-On Filters.



F



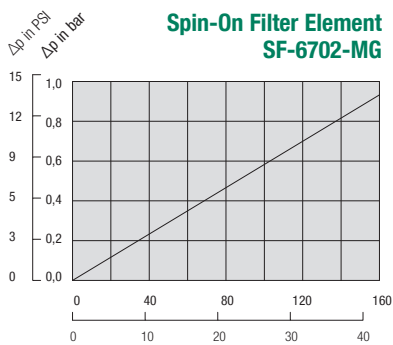
## Spin-On Elements ▪ Type SF-67

The following characteristics are valid for mineral oils with a density of 0,85 kg/dm<sup>3</sup> and the kinematic viscosity of 30 mm<sup>2</sup>/s (30 cSt).

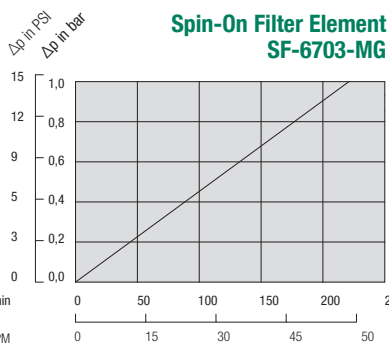
The characteristics have been determined in accordance to ISO 3968. SF-67 Spin-On Elements are used with the STAUFF SSF-20/24/25/100/120/130/160/150/180 Spin-On Filters.

F

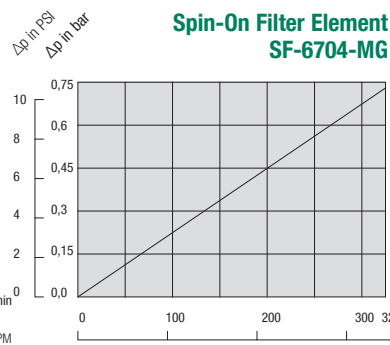
**Spin-On Filter Element SF-6702-MG**



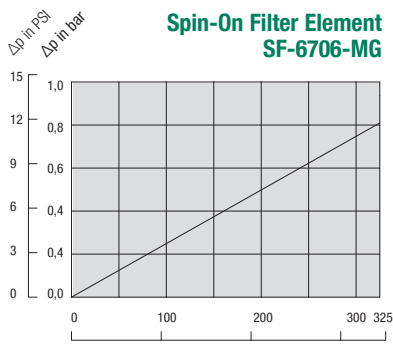
**Spin-On Filter Element SF-6703-MG**



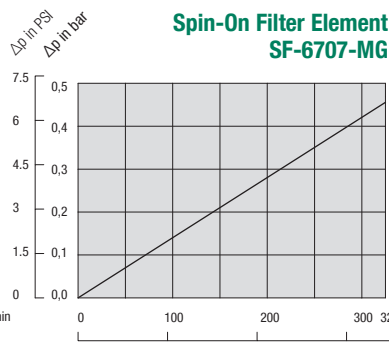
**Spin-On Filter Element SF-6704-MG**



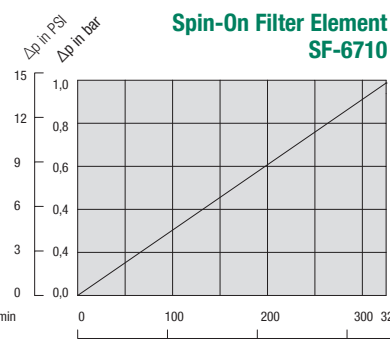
**Spin-On Filter Element SF-6706-MG**



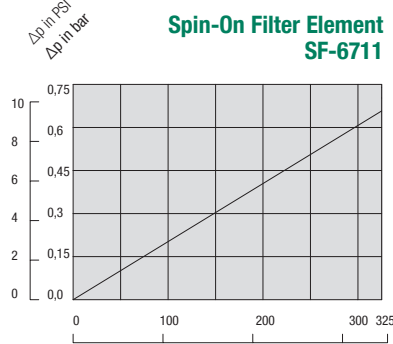
**Spin-On Filter Element SF-6707-MG**



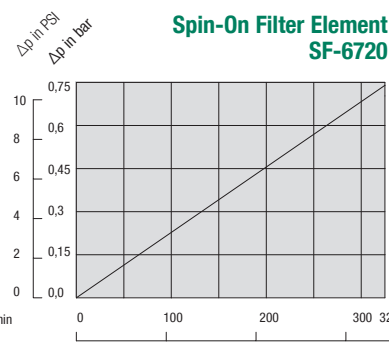
**Spin-On Filter Element SF-6710**



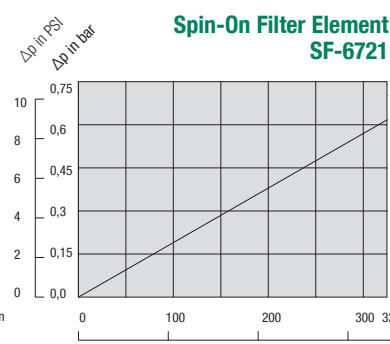
**Spin-On Filter Element SF-6711**



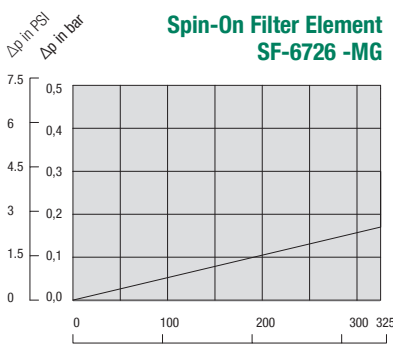
**Spin-On Filter Element SF-6720**



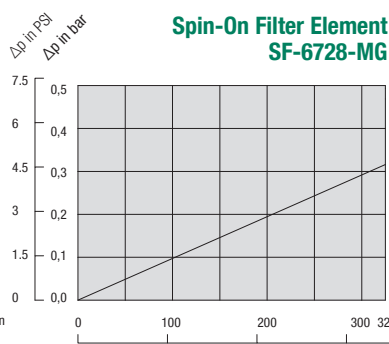
**Spin-On Filter Element SF-6721**



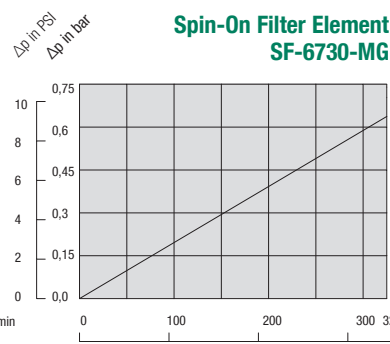
**Spin-On Filter Element SF-6726-MG**



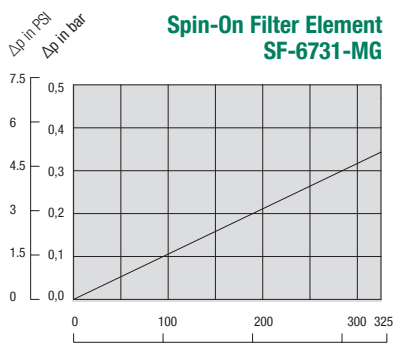
**Spin-On Filter Element SF-6728-MG**



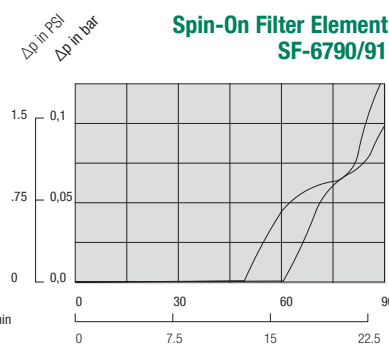
**Spin-On Filter Element SF-6730-MG**



**Spin-On Filter Element SF-6731-MG**



**Spin-On Filter Element SF-6790/91**

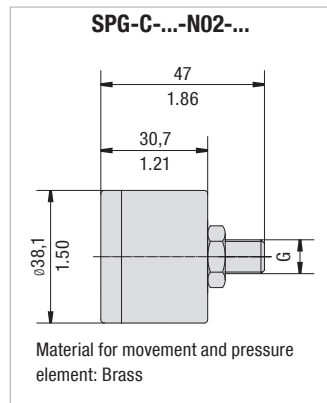
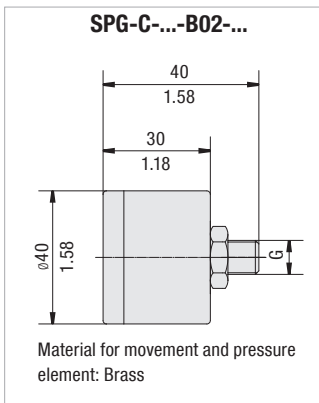


SF6790  
SF6791



## Clogging Indicators

## Visual Indicators



SPG-C-...-B02-...



SPG-C-...-N02-...



SPG-C-...-B02-...



SPG-C-...-N02-...

Visual Pressure Clogging Indicators (for Spin-On Filter in Return-Line applications)							Order Code
Thread	Connection G	Unit of scale	Range of scale	Coloured Segments			
				Green	Yellow	Red	
BSP	1/8	bar	0 ... 2,5	0 ... 1,2	1,2 ... 1,5	1,5 ... 2,5	SPG-C-040-00002.5-02-P-B02-402923
	1/8	bar	0 ... 4	0 ... 2,5	2,5 ... 3	3 ... 4	SPG-C-040-00004-02-P-B02-402922
	1/8	bar	0 ... 12	without coloured segments			SPG-C-040-00012-02-P-B02
NPT	1/8	PSI	0 ... 100	0 ... 13	13 ... 15	15 ... 100	SPG-C-040-00100-03-P-N02-402927
	1/8	PSI	0 ... 100	0 ... 21	21 ... 25	25 ... 100	SPG-C-040-00100-03-P-N02-402928
Visual Vacuum Clogging Indicators (for Spin-On Filter in Suction-Line applications)							Order Code
BSP	1/8	cm Hg	-76 ... 0	-13 ... 0	-18 ... -13	-76 ... -18	SPG-C-040-(-76)-00000-22-P-B02-402924
	1/8	in Hg	-30 ... 0	-4 ... 0	-6 ... -4	-30 ... -6	SPG-C-040-(-30)-00000-23-P-N02-402925
NPT	1/8	in Hg	-30 ... 0	-9 ... 0	-11 ... -9	-30 ... -11	SPG-C-040-(-30)-00000-23-P-N02-402926

## Electrical Clogging Switch

## Order Code

**Limit-Switch - G42NO - S - G02 - B1.3**

①

②

③

④

⑤

## ① Type

Limit-Switch

## ② Connector Type

Electrical Clogging Switch 42 V, NO	<b>G42NO</b>
Electrical Clogging Switch 42 V, NC	<b>G42NC</b>
Electrical Clogging Switch 110 V ... 230 V, two-way contact (only for Plug Type W)	<b>G230</b>

## ③ Plug Type

M12 Five-Pin Connector according to IEC 61076-2-101	<b>M12</b>
AMP-Junior-Timer Plug	<b>A</b>
DEUTSCH Plug DT04-2P	<b>D</b>
Rubber boot	<b>S</b>
90 degree Polyamide cap (only for Connector Type G230)	<b>W</b>

## ④ Thread Type

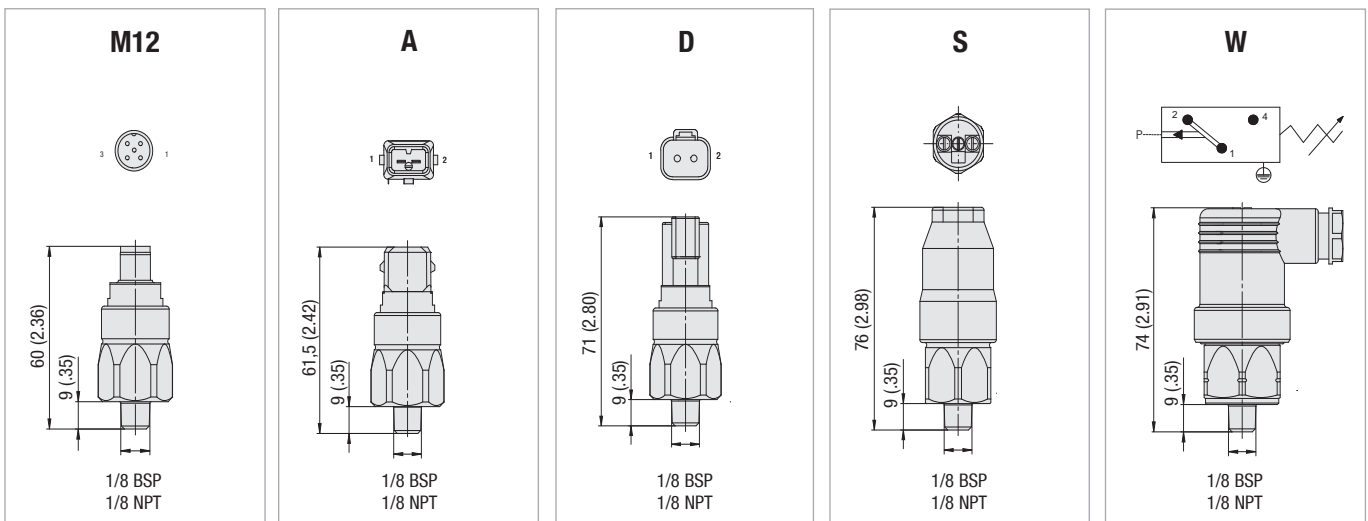
1/8 BSP	<b>G02</b>
1/8 NPT	<b>N02</b>

## ⑤ Pressure Setting

1,3 bar / 18.8 PSI	<b>B1.3</b>
-0,1 bar / -1.45 PSI*	<b>B-0.1</b>

\*(only for Plug Type W and Connector Type G230)

## Dimensions Plug Type



Note: The customer / user carries the responsibility for the electrical connection.

Dimensional drawings: All dimensions in mm/in.

