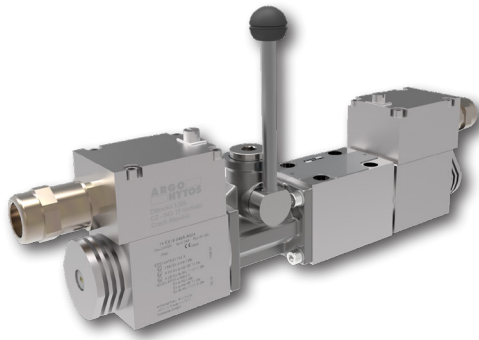


RPERX3-06

Size 06 (D03) • Q_{max} 60 l/min (16 GPM) • p_{max} 350 bar (5100 PSI)



Technical Features

- › Valve and solenoid design prevents a surface temperature capable of igniting
- › Solenoid coil in acc. with directive 2014/34/EU (ATEX) for explosion-hazard zones
- › Explosion protection for gas, dust and mining, Solutions for all zones
- › Encapsulation enclosure solenoid version
- › Auxiliary lever overrides for ON-OFF solenoid valves of the type RPERX3-06 (Datasheet No. 4054) with Size 06 and mounting interface acc. to ISO 4401, DIN 24340 (CETOP 03)
- › Auxiliary lever operators allow the valve to be operated when electrical system is de-energized, e.g. emergency operation, electrical failures, maintenance activities
- › Manual lever and actuation element can be rotated in 90° increments for flexible installation
- › When the valve is electrically operated the hand lever remains stopped in its neutral position
- › The lever override does not affect the performances of the base valve
- › Coil interchangeability with all Argo-Hytos ATEX/IECEx product line
- › In the standard version, the valve is zinc coated for 520 h protection acc. to ISO 9227

Technical Data

Lever characteristics		
Total stroke angle	deg	±20
Working stroke angle		±12 to 20
Lever override length	mm (in)	102 (4.01)
Operating force	N (lbf)	40 (29.5)
Lever device weight		0.59 (1.30)
Weigh including the lever	valve with 1 solenoid	kg (lbs)
	valve with 2 solenoids	3.11 (6.86)
		4.56 (10.05)

Technical data of the valve see Datasheet HA 4054, RPERX3-06.

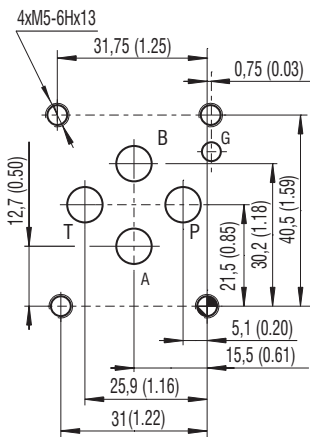
Spool Symbols

For table Spool Symbols see Datasheet HA 4054, RPERX3-06.

Characteristics

For operating limits and pressure drop see Datasheet HA 4054, RPERX3-06.

ISO 4401-03-02-0-05



Ports P, A, B, T - max. Ø7.5 mm (0.29 in)

Ordering Code

RPERX3-06 [] [] / [] [] [] [] / [] [] - B		Surface treatment 520 h salt spray test (ISO 9227)
Explosion proof, 4/2 and 4/3, directional control valve, solenoid operated, with lever override		Manual lever and position of override actuating section* A19 standard, lever on side A, upward B19 standard, lever on side B, upward
Valve size		Seals NBR
Number of valve positions two positions 2 three positions 3		Cable length without cable 3 3000 mm 8 8000 mm
Spool symbols see Datasheet HA 4054 RPERX3-06 the table „Spool Symbols“		Temperature class - solenoid nominal power A4 Class T4 - 10 W A6 Class T6 (T5) - 10 W B4 Class T4 - 18 W**
DC voltage connection box + cable gland 12 V DC / 0.75 A 01200 24 V DC / 0.39 A 02400 48 V DC / 0.19 A 04800 110 V DC / 0.094 A 11000		
AC voltage 50/60 Hz fix installed cable 110 V AC / 0.112 A 11050 230 V AC / 0.052 A 23050		

No designation (only for DC) (AC and DC version)

No designation (AC and DC version)

**Coil B4 (18 W) available only in combination with spool J15

For directional valves with two solenoids, one solenoid must be de-energized before the other solenoid can be charged.

*For valves with one solenoid: the lever is placed always between valve housing and solenoid.

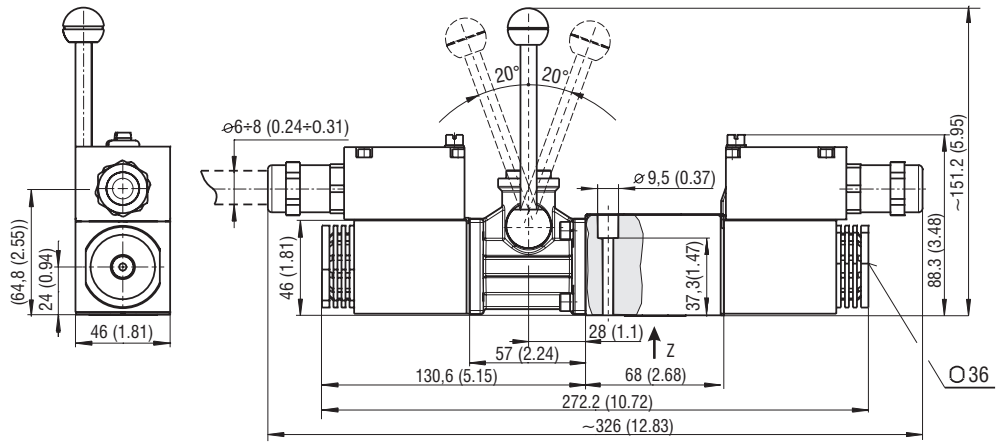
Dimensions in millimeters (inches)

RPERX3-063*

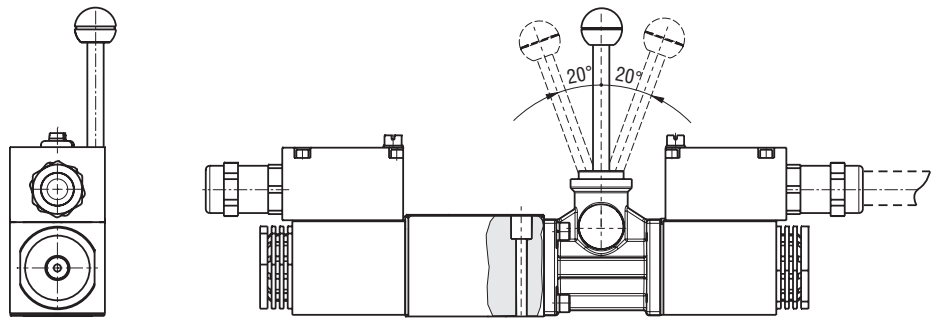


The lever operator should never be used when any solenoid is energized.

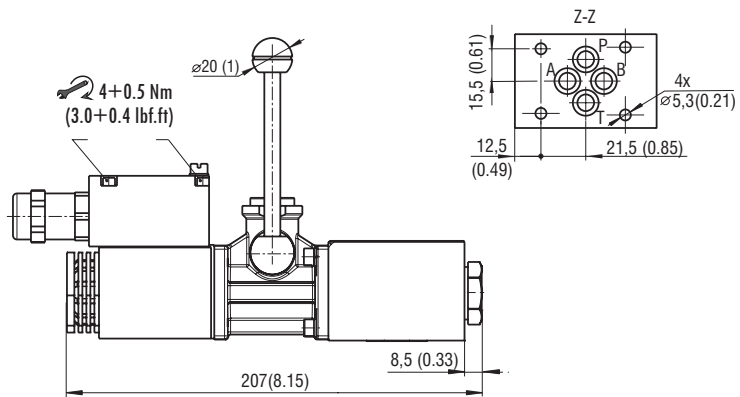
RPERX3-063* / A19



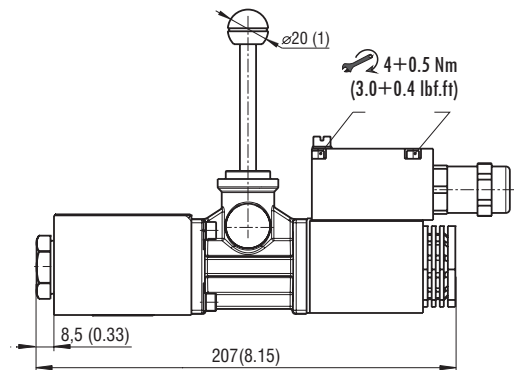
RPERX3-063* / B19



RPERX3-062* / A19



RPERX3-062* / B19



Mounting screws 8.9+1 Nm (6.56+0.7 lbf.ft)
M5x45 DIN 912-10.9

Manual lever and actuating section is shown in the standard supplied position which is the most frequently used. Both elements can be rotated to various positions 90° apart. For other positions of lever and actuating section consult our technical department for their identification.